



# A Journey of Contribution and Collaboration in Open Source

**Ivar Grimstad**



*Jakarta EE Developer Advocate*

*Eclipse Foundation*



**@ivar\_grimstad**



**@ivar\_grimstad@mastodon.social**



**<https://github.com/ivargrimstad>**



**<https://www.linkedin.com/in/ivargrimstad>**



**[https://www.threads.net/@ivargrimstad\\_official](https://www.threads.net/@ivargrimstad_official)**



**ivargrimstad\_official**



**Oracle ACE  
Pro**



The logo for the Eclipse Foundation. It features a stylized orange arc on the left side, resembling a partial eclipse. To the right of the arc, the word "ECLIPSE" is written in a bold, dark grey, sans-serif font. Below "ECLIPSE", the word "FOUNDATION" is written in a bold, orange, sans-serif font.

**ECLIPSE**  
**FOUNDATION**

**420+**

**Projects**

**385**

**Members**

**2000+**

**Committers**

**450M+**

**Lines of Code**

**70+**

**Staff Members**

**21**

**Industry Collaborations**



A black and white, motion-blurred photograph of a crowd of people walking away from the camera on a wide, paved walkway. The people are dressed in business attire, and the background shows a large, domed building, possibly a government or institutional structure. The overall atmosphere is one of a busy, professional environment.

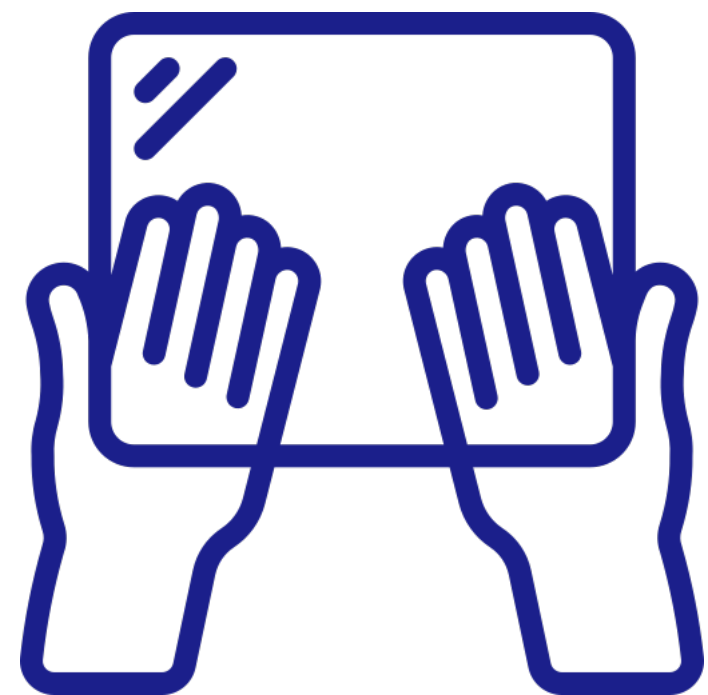
**Open Source**







# Open Source Principles



## **Transparency**





**Transparency**



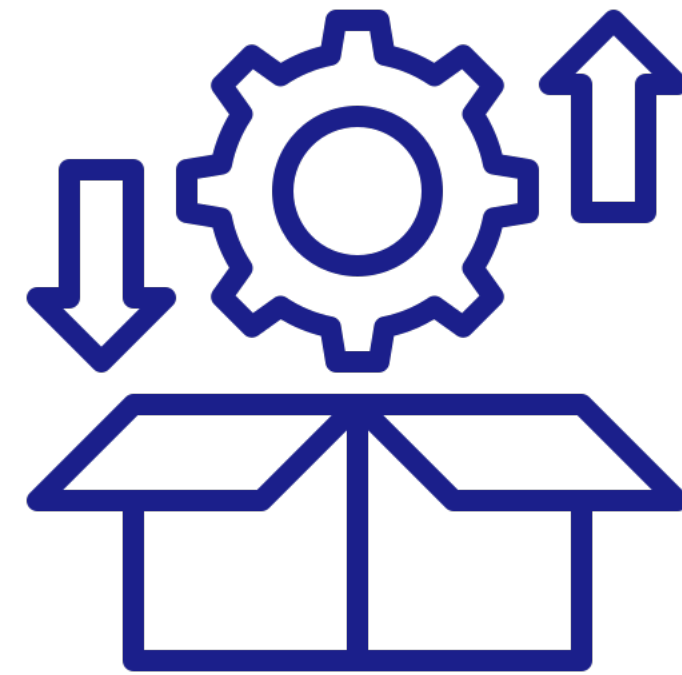
**Collaboration**



**Transparency**



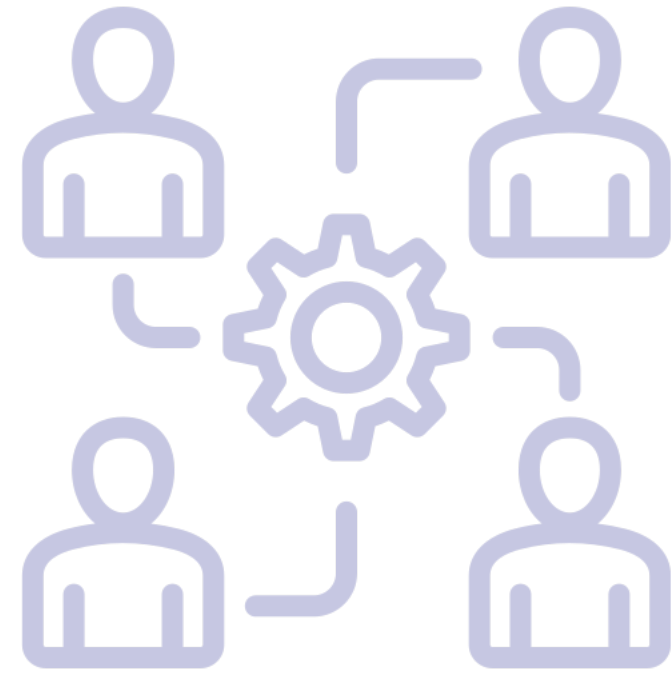
**Collaboration**



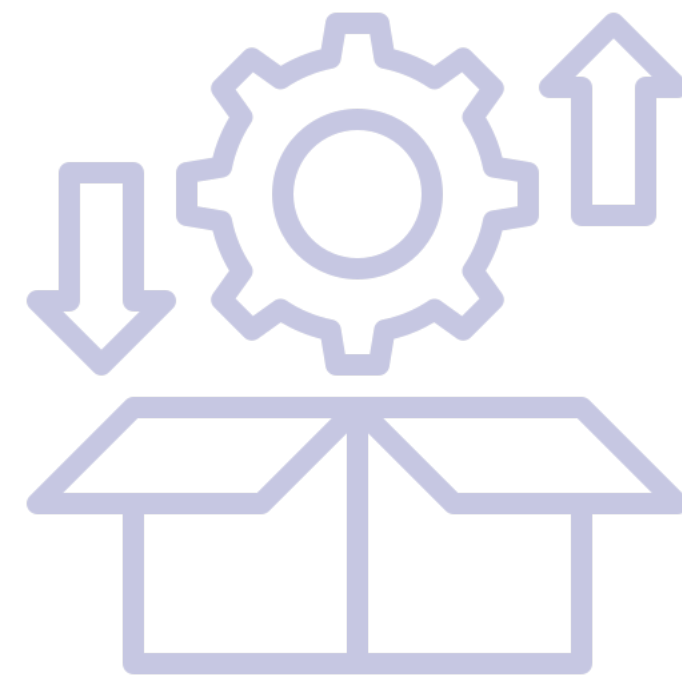
**Release Early  
and Often**



**Transparency**



**Collaboration**



**Release Early  
and Often**



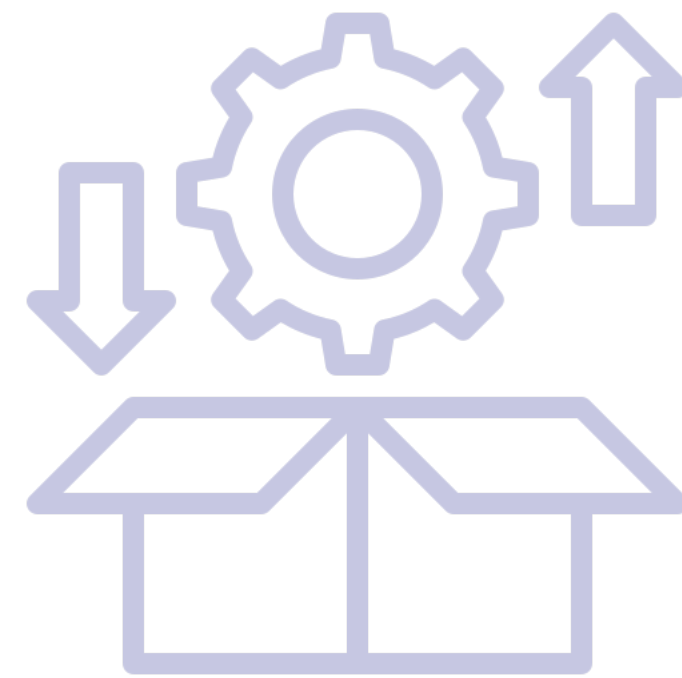
**Inclusive  
Meritocracy**



**Transparency**



**Collaboration**



**Release Early  
and Often**



**Inclusive  
Meritocracy**



**Community**

# Open Source Licenses



# Open Source Initiative

<https://opensource.org/licenses>



# **Open Source**

**vs**

# **Source Available**

A black and white, motion-blurred photograph of a crowd of people walking away from the camera on a wide, paved walkway. The background shows a large, domed building, possibly a government or institutional structure. The overall atmosphere is one of a busy, public space.

**Consume Responsibly**

# Open Source Projects



**Solo**



**Single Vendor**



**Community**



**Foundation**



**Solo**

**Description**

One or two programmers control code, decisions, support

**Contributing**

Either extremely easy or extremely hard

**Support**

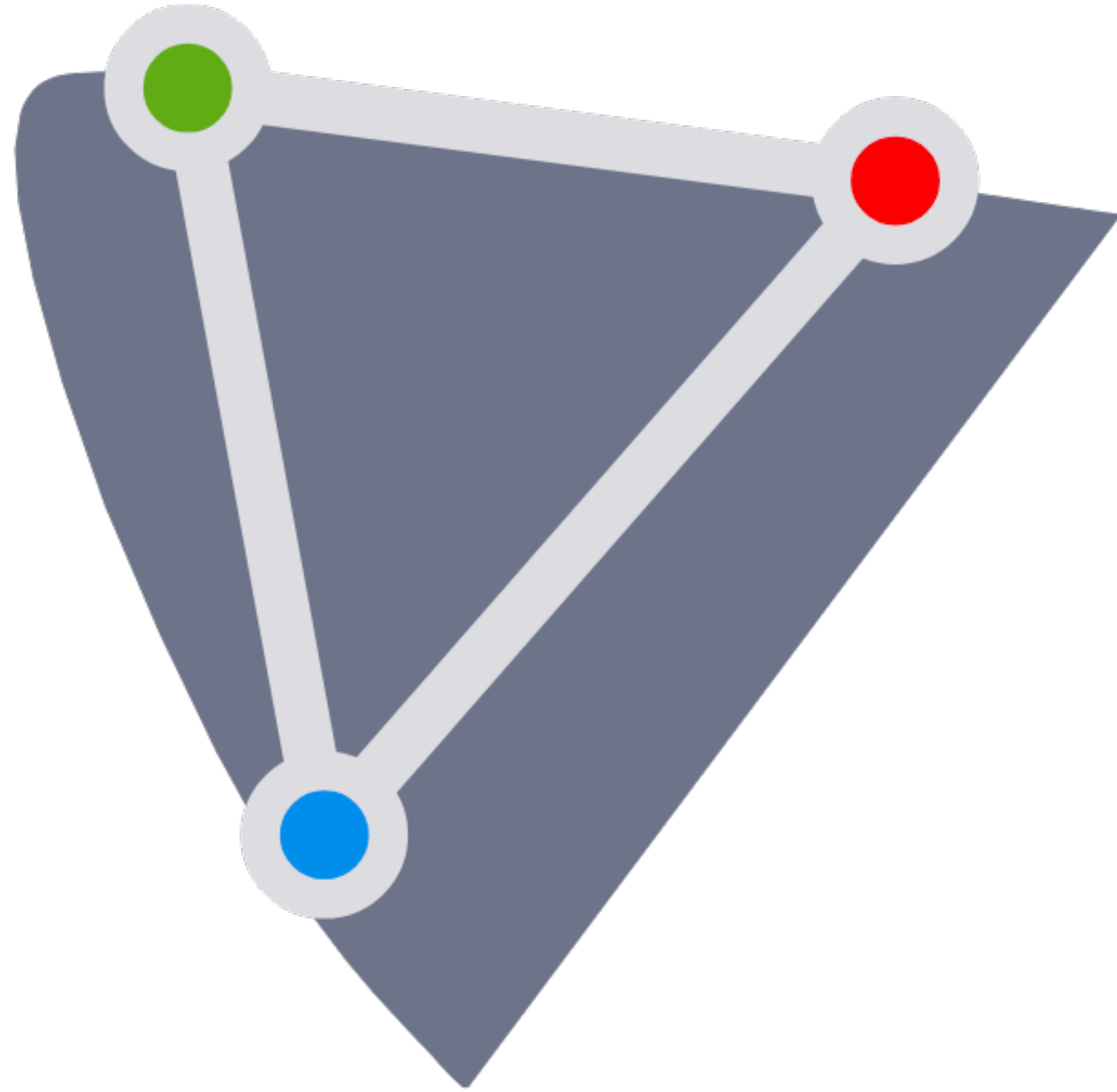
Usually very responsive or abandoned

**Examples**

Byte Buddy  
SnoopEE



**Solo**







## Single Vendor

### Description

Open sourced by a company,  
employees as contributors

### Contributing

Usually difficult

### Support

Reliable support obtained through  
support contracts with sponsoring  
company

### Examples

Spring Framework  
Gradle



**Single Vendor**



**akka**



## Community

### Description

Significant number of contributors,  
usually democratic

### Contributing

Generally welcoming, no formal  
process

### Support

Participation in the social process  
required

### Examples

PostgreSQL  
OpenJDK  
mockito



**Community**





# Community



**Description**

Formal organisation open source projects. Often projects critical to several large companies.

**Contributing**

Formal process, meritocracy

**Support**

Sponsoring companies providing paid support  
Unpaid support similar as communities

**Examples**

Eclipse Jetty  
Apache Maven  
Kubernetes

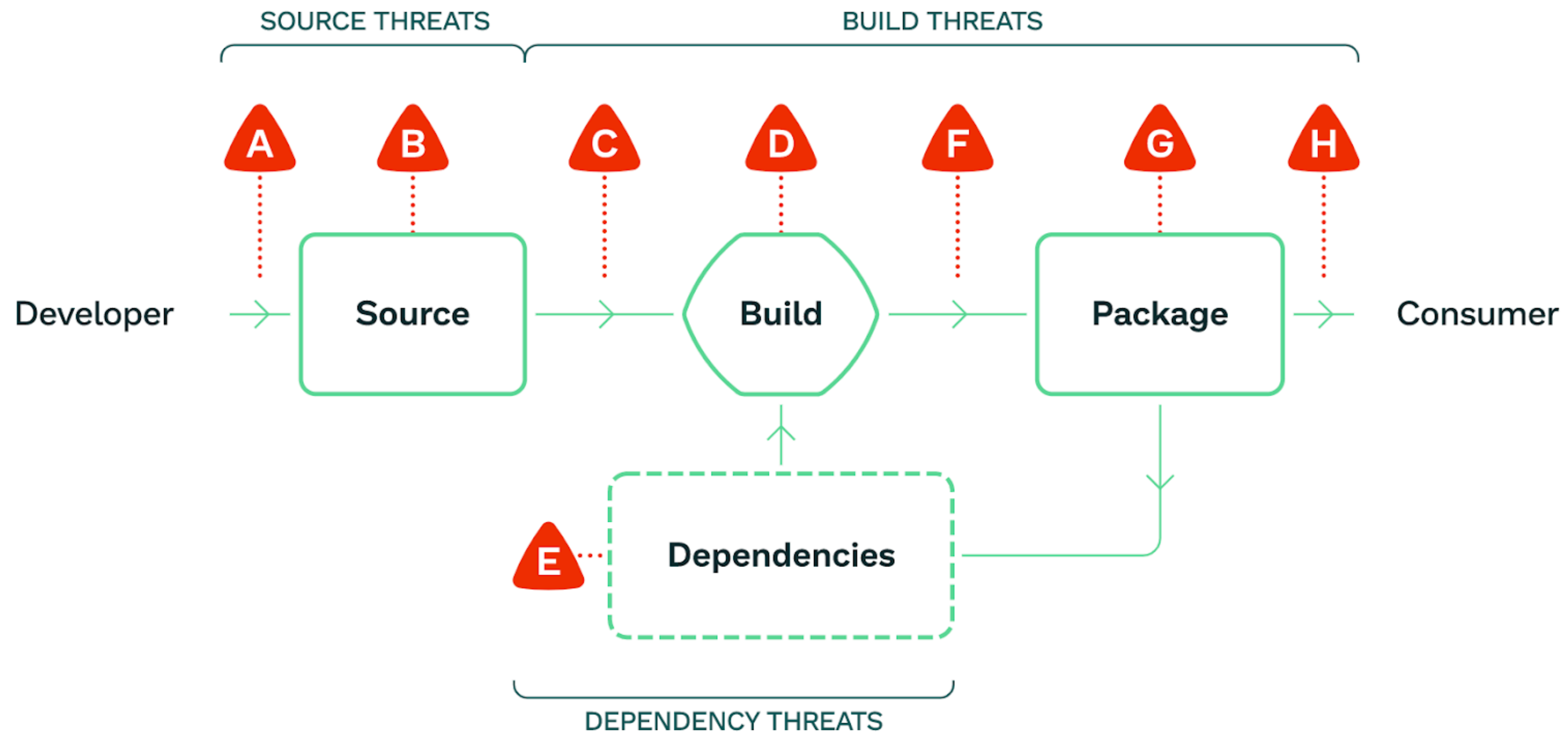




# Security

solarwinds





#### SOURCE THREATS

- A** Bypassed code review
- B** Compromised source control system

#### BUILD THREATS

- C** Modified code after source control
- D** Compromised build platform
- F** Bypassed CI/CD
- G** Compromised package repo
- H** Using a bad package

#### DEPENDENCY THREATS

- E** Using a bad dependency

<https://slsa.dev/>

# Collaboration Platform

# Governance Platform



**Infrastructure  
for Open  
Collaboration**



**Ecosystem  
Development**



**Community  
Governance  
& Processes**



**IP Management  
& Licensing**



**Supply Chain  
Security**

# Collaboration Platform

# Governance Platform



Infrastructure  
for Open  
Collaboration



Ecosystem  
Development



Community  
Governance  
& Processes



IP Management  
& Licensing



Supply Chain  
Security

 **ECLIPSE**  
FOUNDATION

# **Evolving Expectations**

**Is this license compatible with your project license?**

**Does the license allow me to do X?**

**Where is your Software Bill of Materials?**

**Is the project REUSE compliant?**

**Does the open source project follow an OpenChain conformant process?**

**How do you handle vulnerabilities?**

**Will you assign a CVE?**





# Regulations

# **European Cyber Resiliency Act (CRA)**

# **Product Liability Directive (PLD)**



MAY 12, 2021

# Executive Order on Improving the Nation's Cybersecurity

BRIEFING ROOM PRESIDENTIAL ACTIONS

By the authority vested in me as President by the Constitution and the laws of the United States of America, it is hereby ordered as follows:



117<sup>TH</sup> CONGRESS  
2<sup>D</sup> SESSION

# S. 4913

[Report No. 117-278]

To establish the duties of the Director of the Cybersecurity and Infrastructure Security Agency regarding open source software security, and for other purposes.

IN THE SENATE OF THE UNITED STATES

SEPTEMBER 21, 2022

Mr. PETERS (for himself and Mr. PORTMAN) introduced the following bill; which was read twice and referred to the Committee on Homeland Security and Governmental Affairs

DECEMBER 19, 2022

Reported by Mr. PETERS, with amendments

[Omit the part struck through and insert the part printed in italic]

## A BILL

To establish the duties of the Director of the Cybersecurity and Infrastructure Security Agency regarding open source software security, and for other purposes.

*Be it enacted by the Senate and House of Representatives of the United States of America in Congress assembled,*

### SECTION 1. SHORT TITLE.

This Act may be cited as the "Securing Open Source Software Act of 2022".

# Collaboration Platform

# Governance Platform



Infrastructure  
for Open  
Collaboration



Ecosystem  
Development



Community  
Governance  
& Processes



IP Management  
& Licensing

Public  
Policy



# OPEN REGULATORY COMPLIANCE WORKING GROUP

Key Stakeholders From Industry and Open Source Communities Are Collaborating to Support Compliance With Government Regulations, Ensuring The Continued Use and Advancement of Open Source Through the Software Supply Chain.

[Get Involved](#)

[Learn More](#)

<https://orcwg.org>



A black and white, motion-blurred photograph of a crowd of people walking away from the camera on a wide, paved walkway. The people are dressed in business attire, and the background shows a large, classical-style building with columns. The overall atmosphere is one of a busy, professional environment.

**Contribute Responsibly**

# **First Rule of Contributing to Open Source**



# Contribute!

# How to Get Started?

# Convince my Boss?



# Improve the Software **YOU** Rely On

# Why Contribute?

**Improve YOUR Skills**

# **Build Your Reputation and Career**



# What to Contribute?

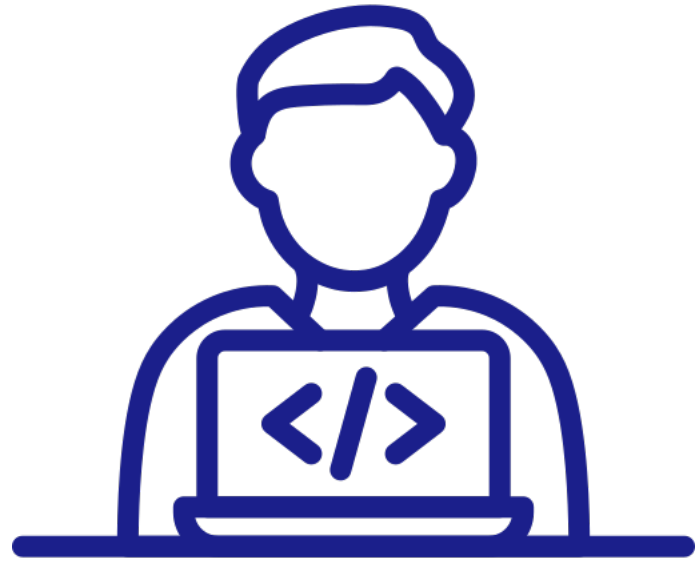
**Does Not Need to be  
CODE**

**Follow Your Passion**

# Where to Contribute?



# **My Journey**



**Solo**



**Single Vendor**



**Community**



**Foundation**





**Solo**



**Single Vendor**



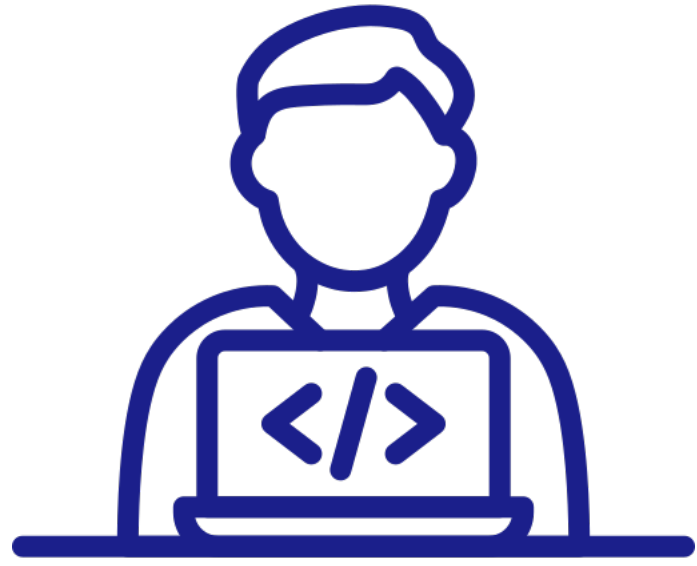
**Community**



**Foundation**







**Solo**



**Single Vendor**



**Community**



**Foundation**





**Solo**



**Single Vendor**



**Community**



**Foundation**





**Solo**



**Single Vendor**



**Community**



**Foundation**





**Solo**



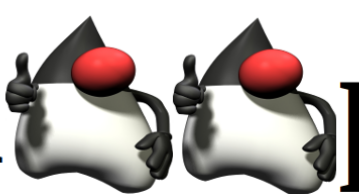
**Single Vendor**



**Community**



**Foundation**

Sn  pEE





**Solo**



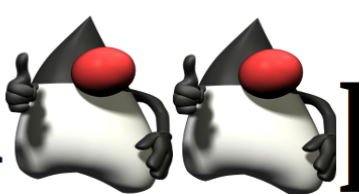
**Single Vendor**



**Community**



**Foundation**

Sn  pEE



Apache NetBeans





**Solo**



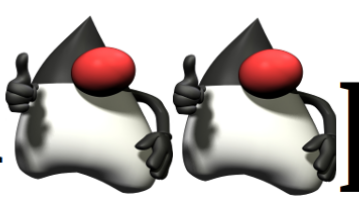
**Single Vendor**

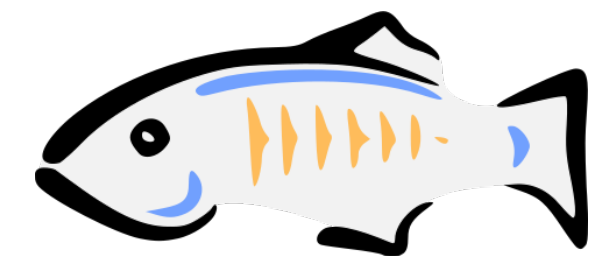


**Community**



**Foundation**

Sn  pEE



Apache NetBeans



**Solo**



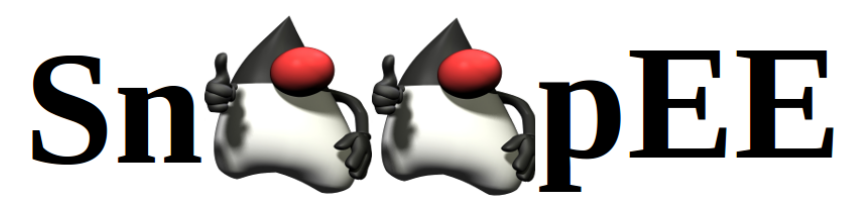
**Single Vendor**



**Community**



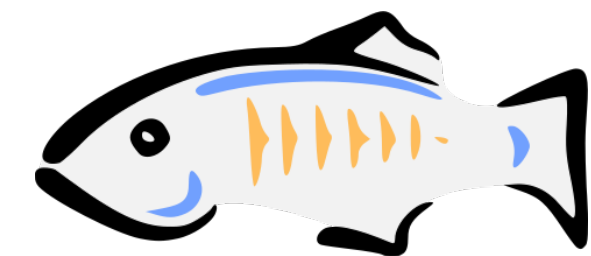
**Foundation**



JAKARTA EE



Apache NetBeans





**User**



**First-time  
Contributor**



**Regular  
Contributor**



**Committer /  
Lead / Mentor**



	GitHub	Single-Vendor Open Source	Eclipse Foundation
<b>Thriving developer community</b>	✓	✓	✓
<b>High quality code</b> that solves complex problems	✓	✓	✓
<b>Ecosystem development and marketing</b> services to drive adoption and monetization		✓	✓
<b>Predictable processes and guidance</b> to deliver large-scale innovation on a regular cadence			✓
<b>Vendor-neutral governance</b> model to support industry-wide collaboration			✓
<b>Business-friendly IP and licensing</b> services to enable commercialization			✓

# How to Contribute?

# HELP SHAPE THE FUTURE OF CLOUD NATIVE JAVA

## *GET INVOLVED IN JAKARTA EE!*

To get involved in any Jakarta EE project or initiative, start by [creating an Eclipse Foundation account](#).

Once you have an account, you can choose any of the methods below to participate.



### Join the Conversation

Join our communication channels to learn about the latest community initiatives and determine how you can get involved.



[Join the conversation on email](#)



[Join us on Social Media](#)



[Join us on Slack](#)



### How to Contribute

Select a [Jakarta EE project of interest](#), join the project's mailing list and start communicating with the team.

**Show Your SUPPORT**

# Contribute **Responsibly**



# EU Cyber Resilience Act



For safer & more secure  
digital products

#DigitalEU #CyberSecEU

The logo for the Eclipse Foundation. It features a stylized orange arc on the left side, resembling a partial eclipse. To the right of the arc, the word "ECLIPSE" is written in a bold, dark grey, sans-serif font. Below "ECLIPSE", the word "FOUNDATION" is written in a bold, orange, sans-serif font.

**ECLIPSE**  
**FOUNDATION**



**Summary**





**Solo**



**Single Vendor**



**Community**



**Foundation**

# **First Rule of Contributing to Open Source**

# Remember

## **First Rule of Contributing to Open Source**

**Eclipse Foundation**

**<https://eclipse.org>**

**Jakarta EE**

**<https://jakarta.ee>**

**Get Involved**

**<https://jakarta.ee/community/get-involved/>**

**Blog**

**<https://www.agilejava.eu>**

A black and white, motion-blurred photograph of a crowd of people walking away from the camera on a wide, paved walkway. The people are dressed in business attire, and the background shows a cityscape with buildings and a large dome structure, possibly a government building or a major transit hub.

**Thank You!**