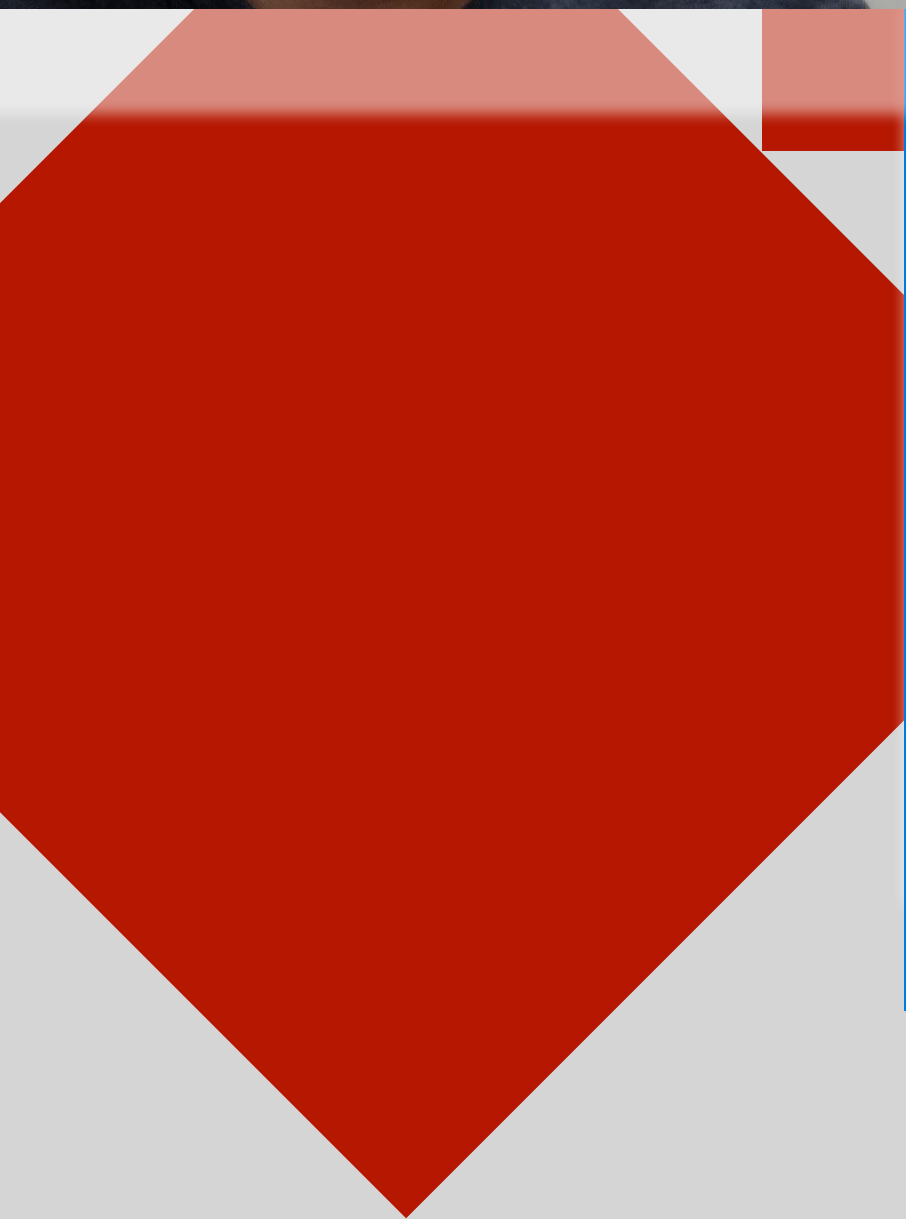




—
unibz
—



I WILL SPEAK AT

SFSCON

2 INSPIRING DAYS
1 FESTIVAL
100 SPEAKERS

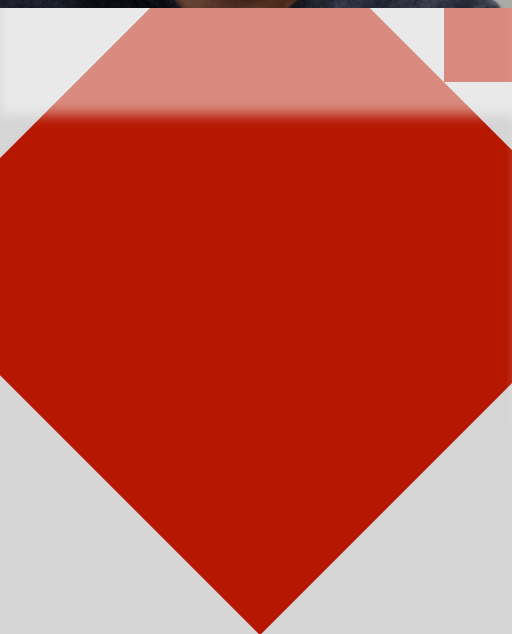


NOI TECHPARK SOUTH TYROL



WWW.SFSCON.IT

BE PART OF IT! 



I WILL SPEAK AT

SFSCON

2 INSPIRING DAYS
1 FESTIVAL
100 SPEAKERS



NOI TECHPARK SOUTH TYROL



WWW.SFSCON.IT

BE PART OF IT! 

**Don't let
microservices
kill you**

Develop

Architect



Software is the key to
company's value

Develop

Architect



Software is the key to
company's value

Develop



Architect

Architecture improves
the software's quality



Software is the key to
company's value

Develop

Experiment, feedback,
improve, and repeat



Architect

Architecture improves
the software's quality



Software is the key to
company's value

Develop

Experiment, feedback,
improve, and repeat



Architect

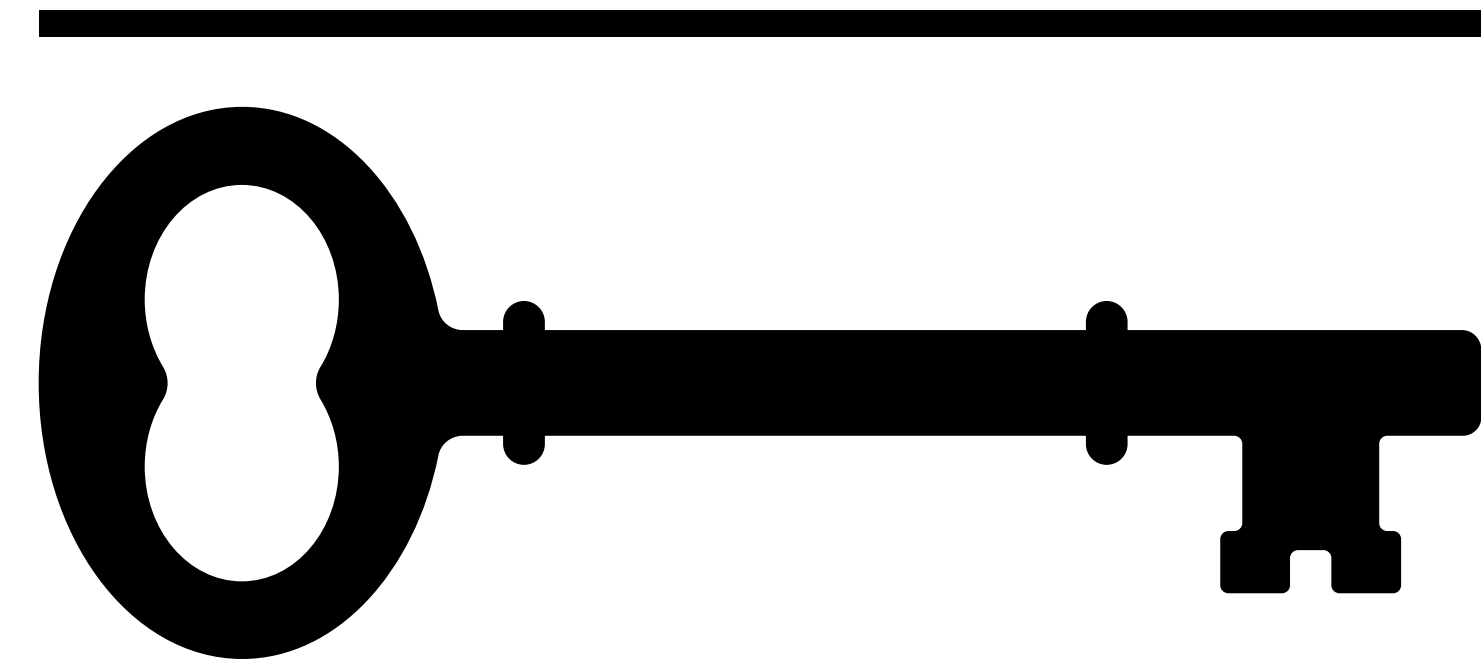
Architecture improves
the software's quality

Reckless development
causes debts

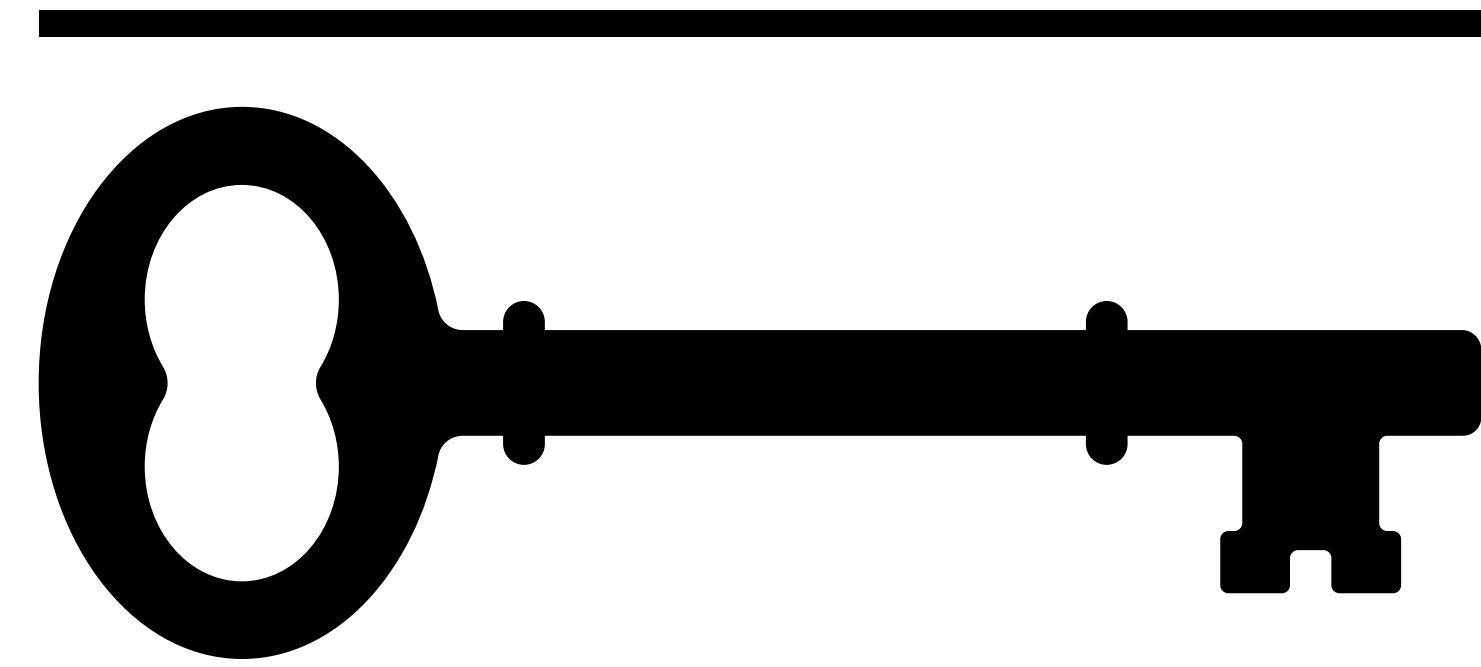


How to design
future-proof
software





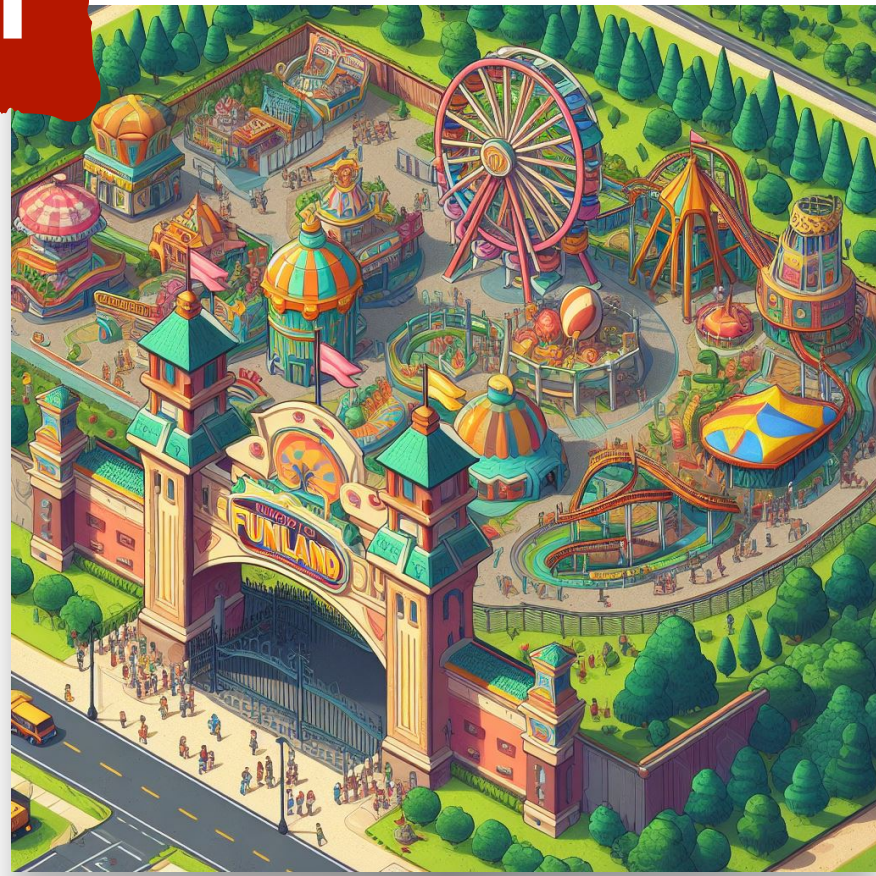
design an
opened architecture



*learn how to
scape from its locks*

Scaping
locks in
4 steps

1



Scaping locks in 4 steps

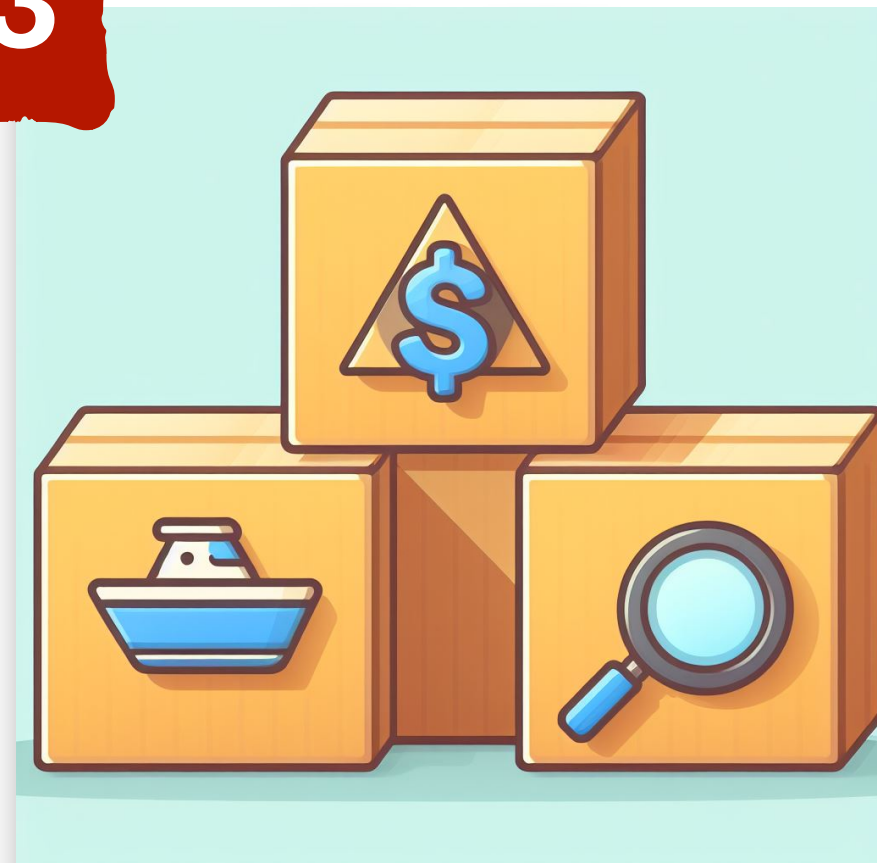
4



2



3



Step 0

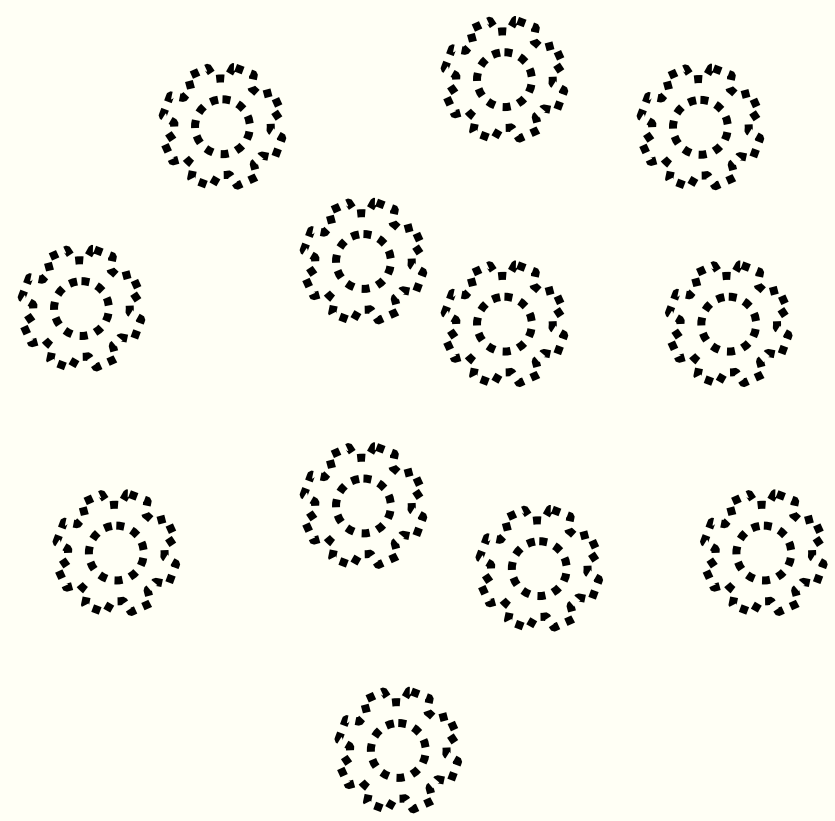
Don't let
microservices
kill you



Don't let microservices kill you

Step 0

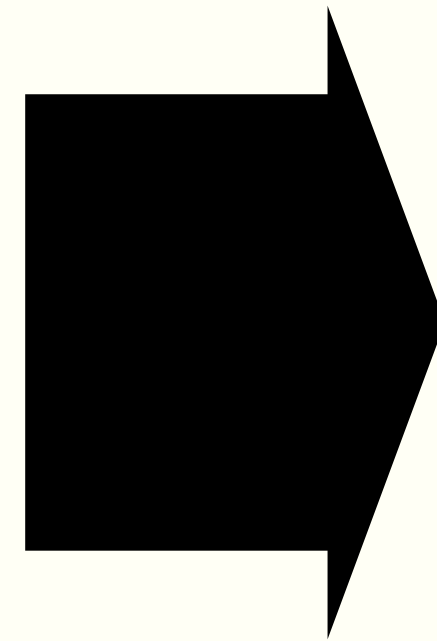




Don't let microservices kill you

Step 0

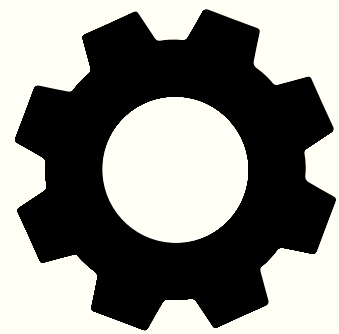




low complexity

easy to deploy

fast to begin delivering value



Step 0

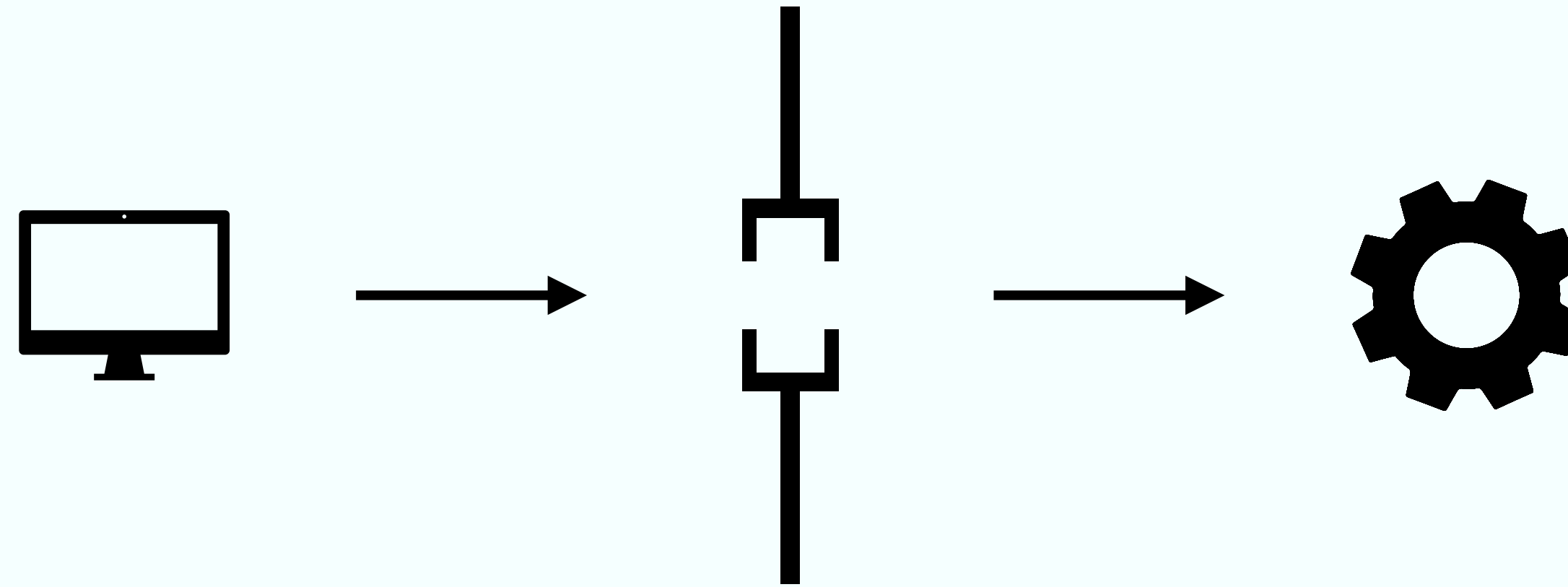
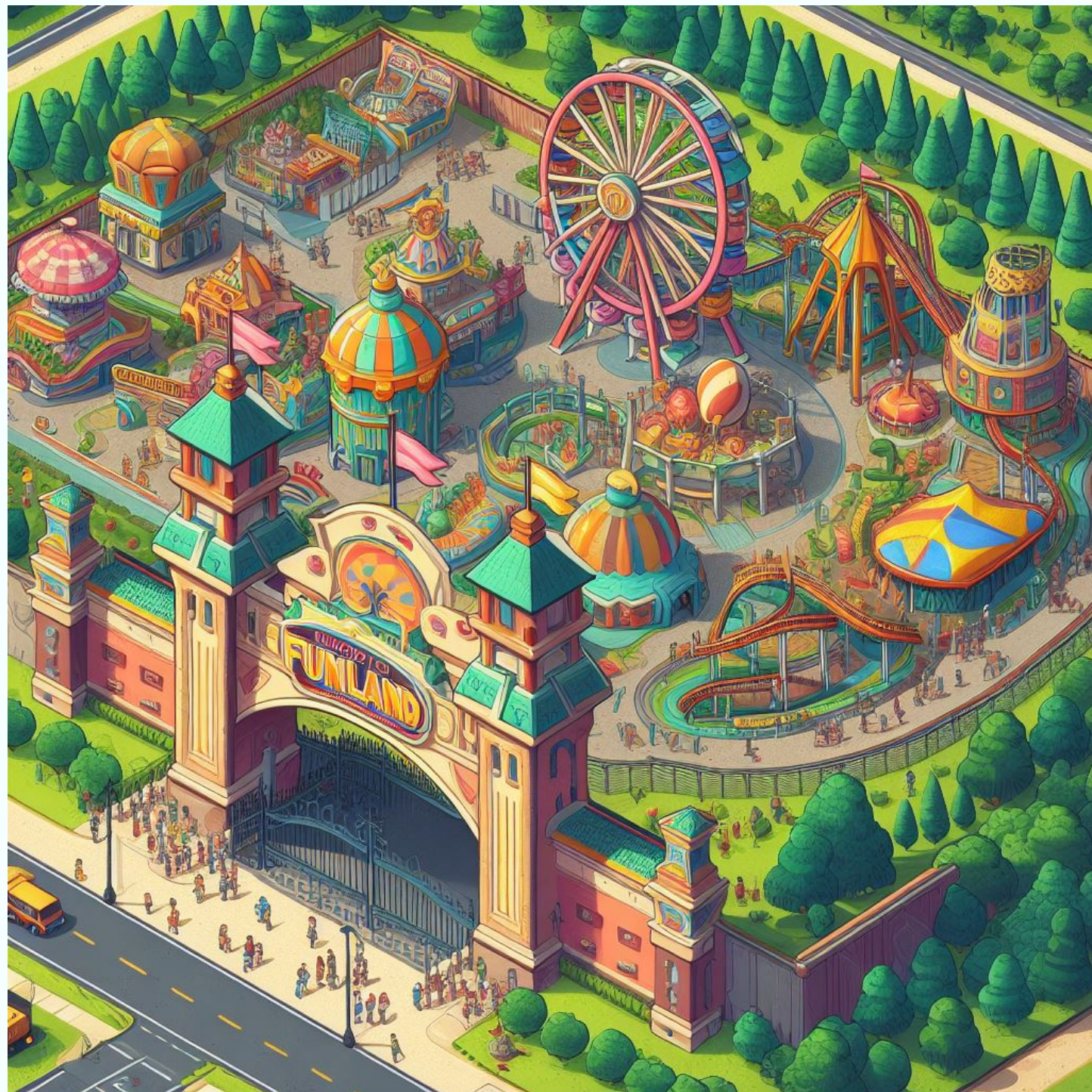
Don't let microservices kill you





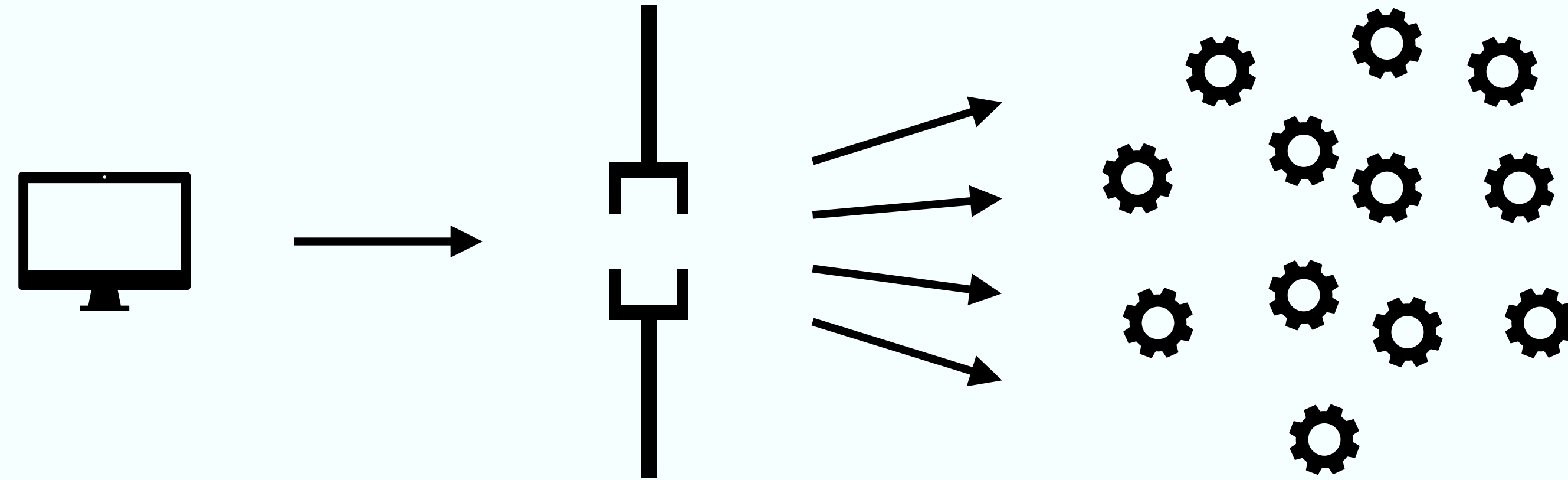
Step 1

Add a single entry point for the backend



Step 1

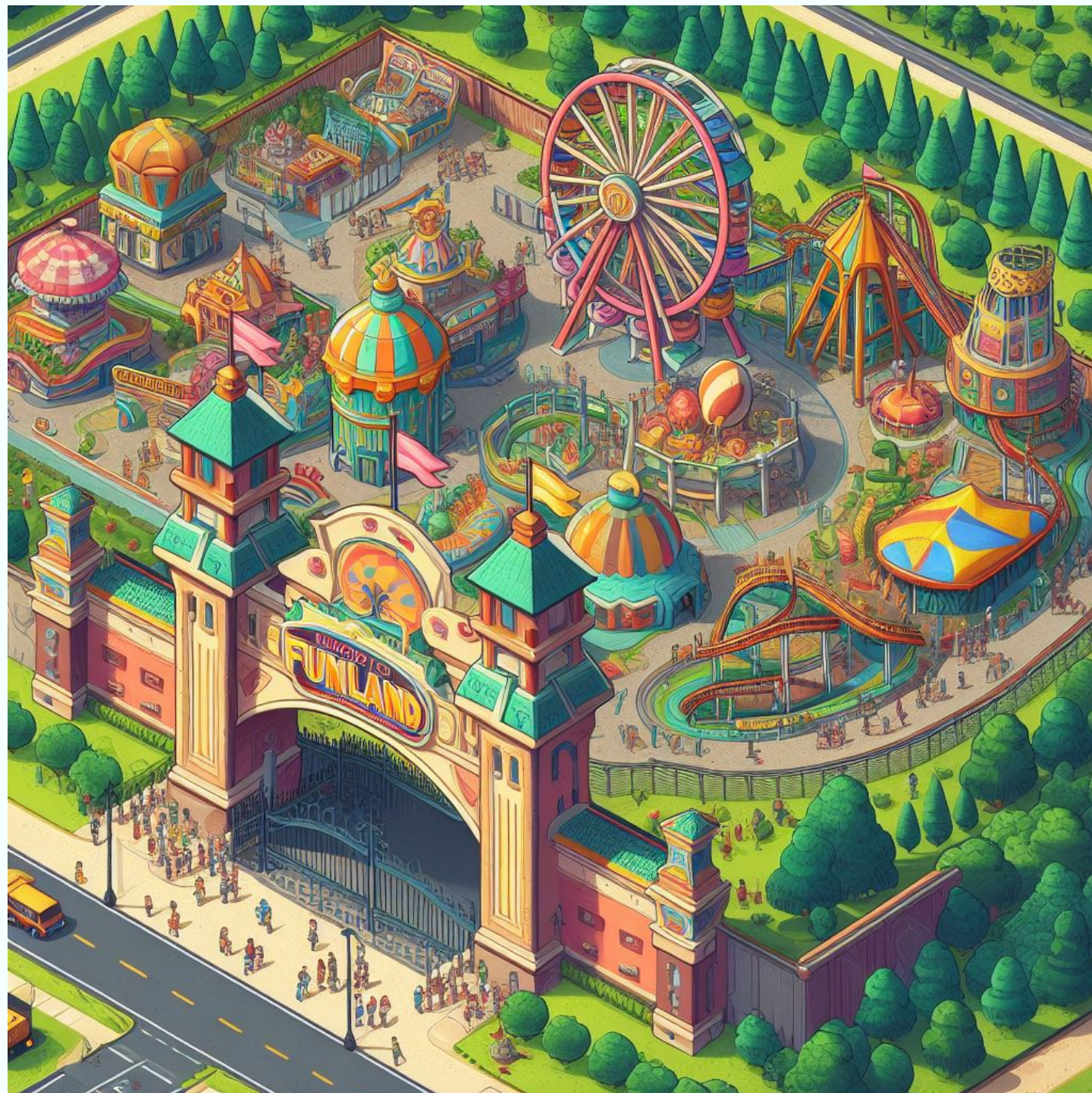
Add a single entry point for the backend



no changes for the client
better control of load
offloading responsibilities

Step 1

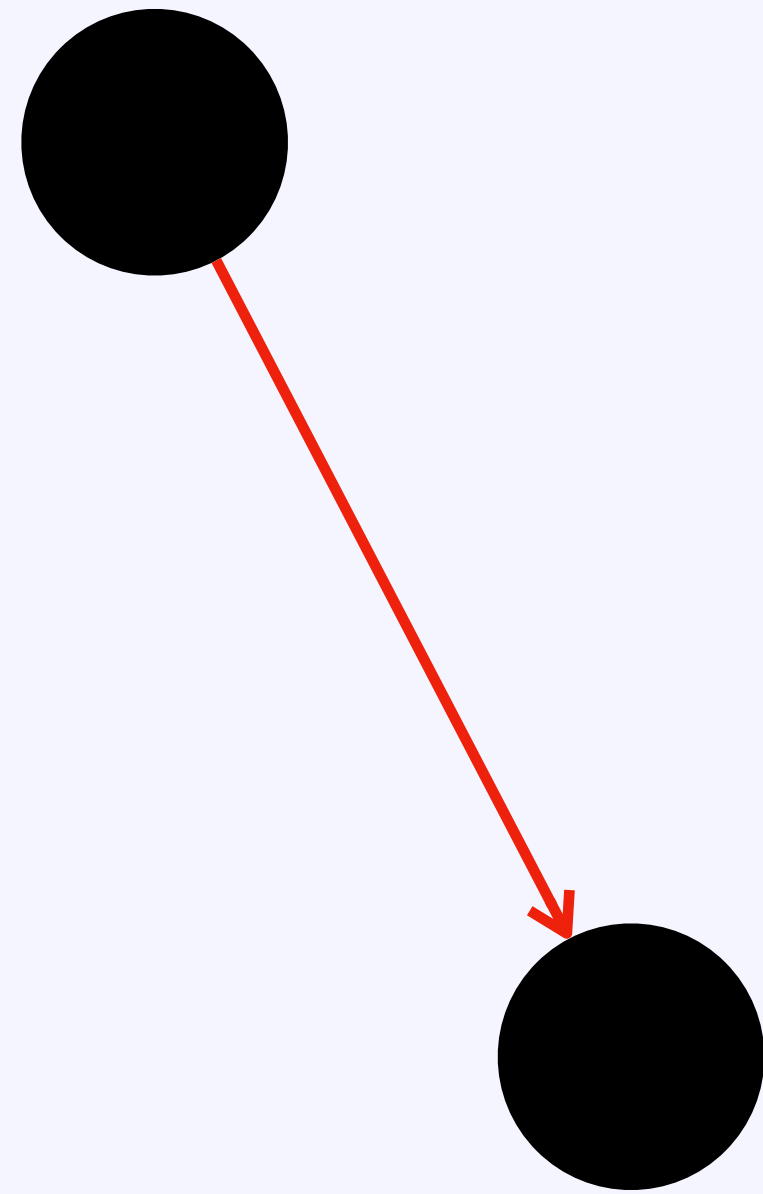
Add a single entry point for the backend



Step 2

Define clear boundaries

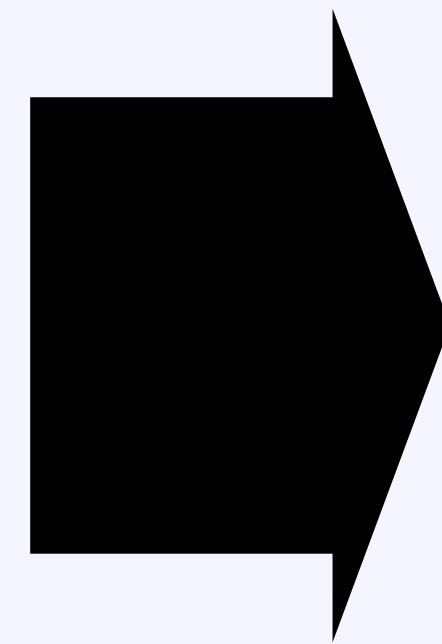
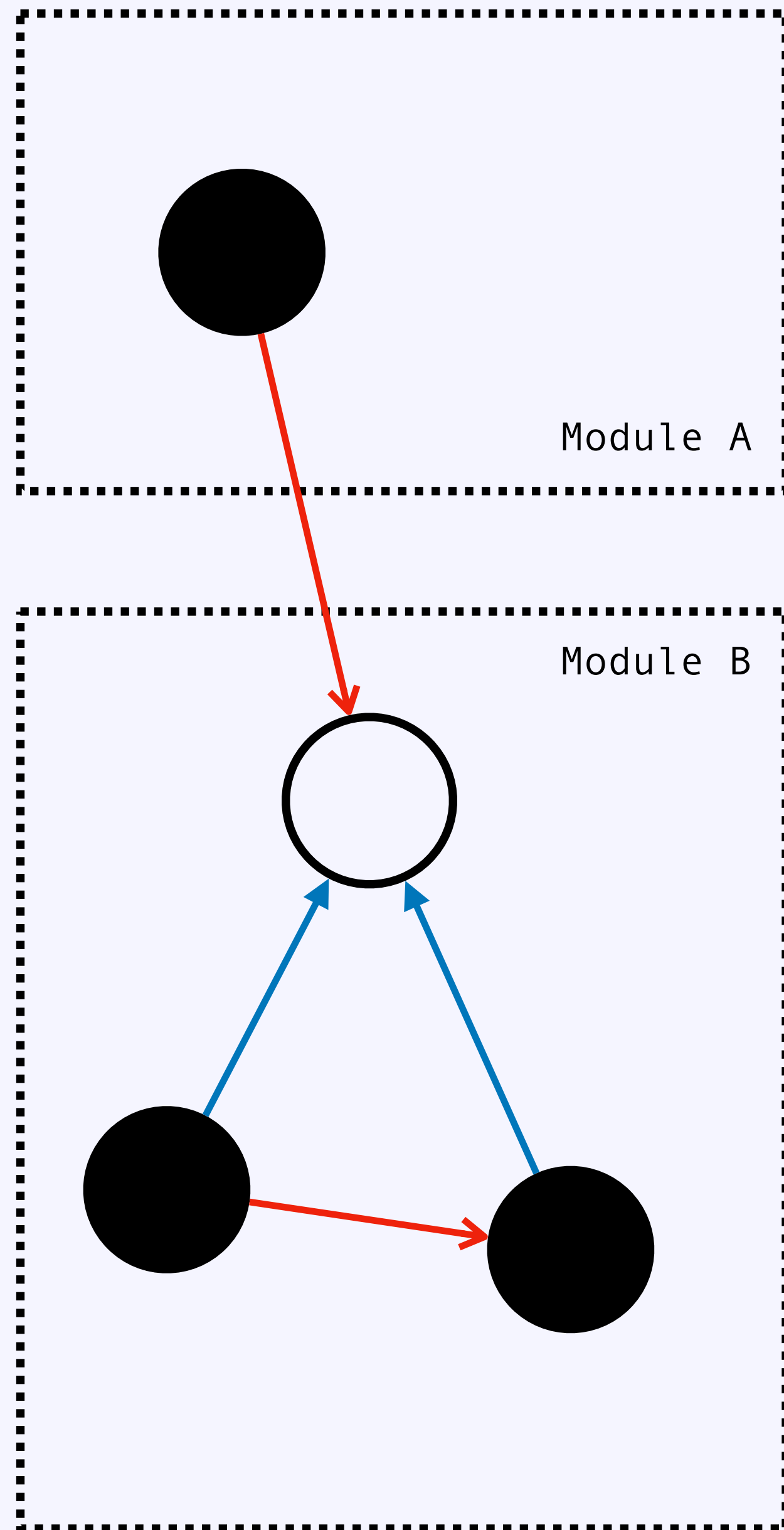




Step 2

Define clear boundaries



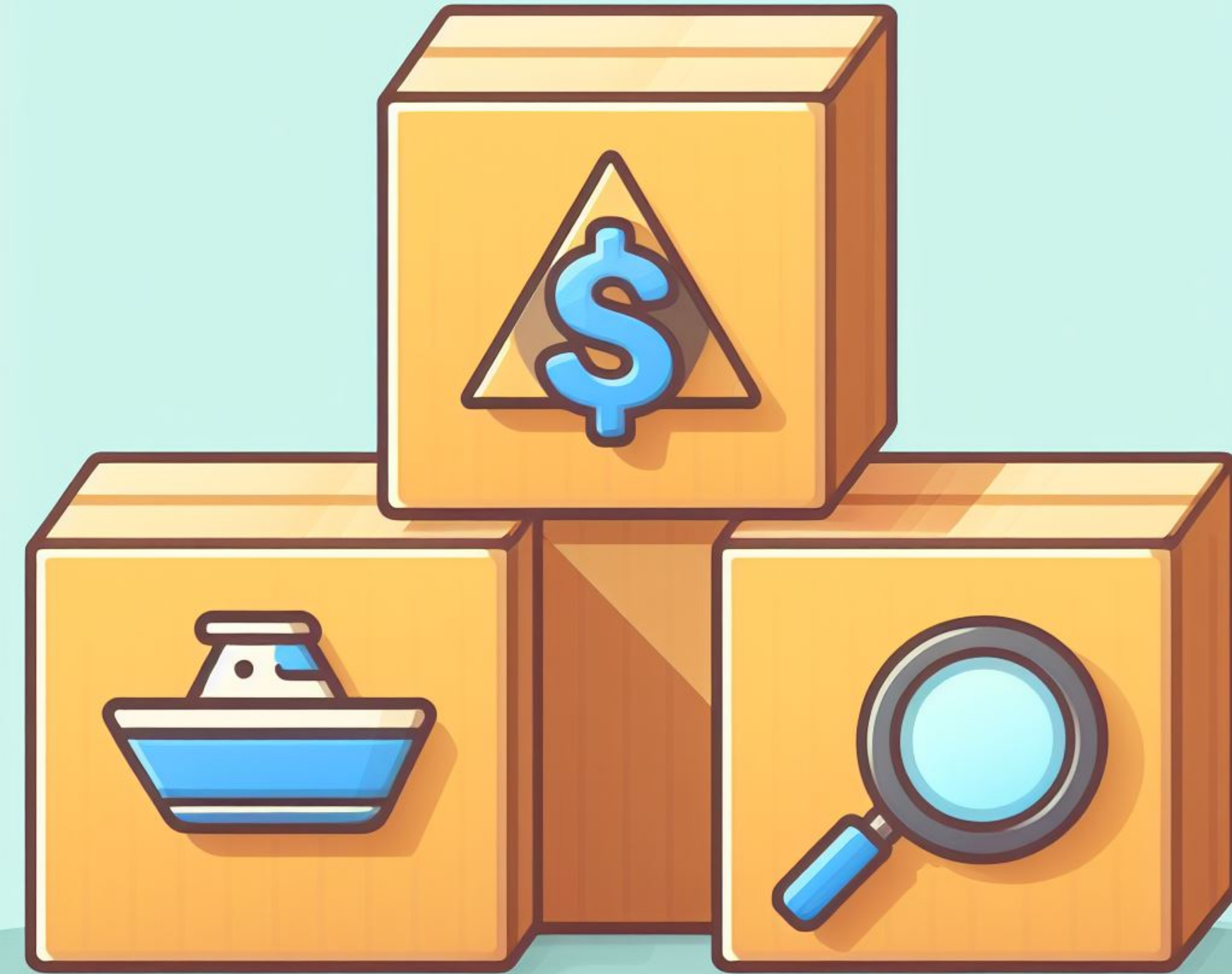


reduces coupling
enables remote proxying
promotes extensibility

Step 2

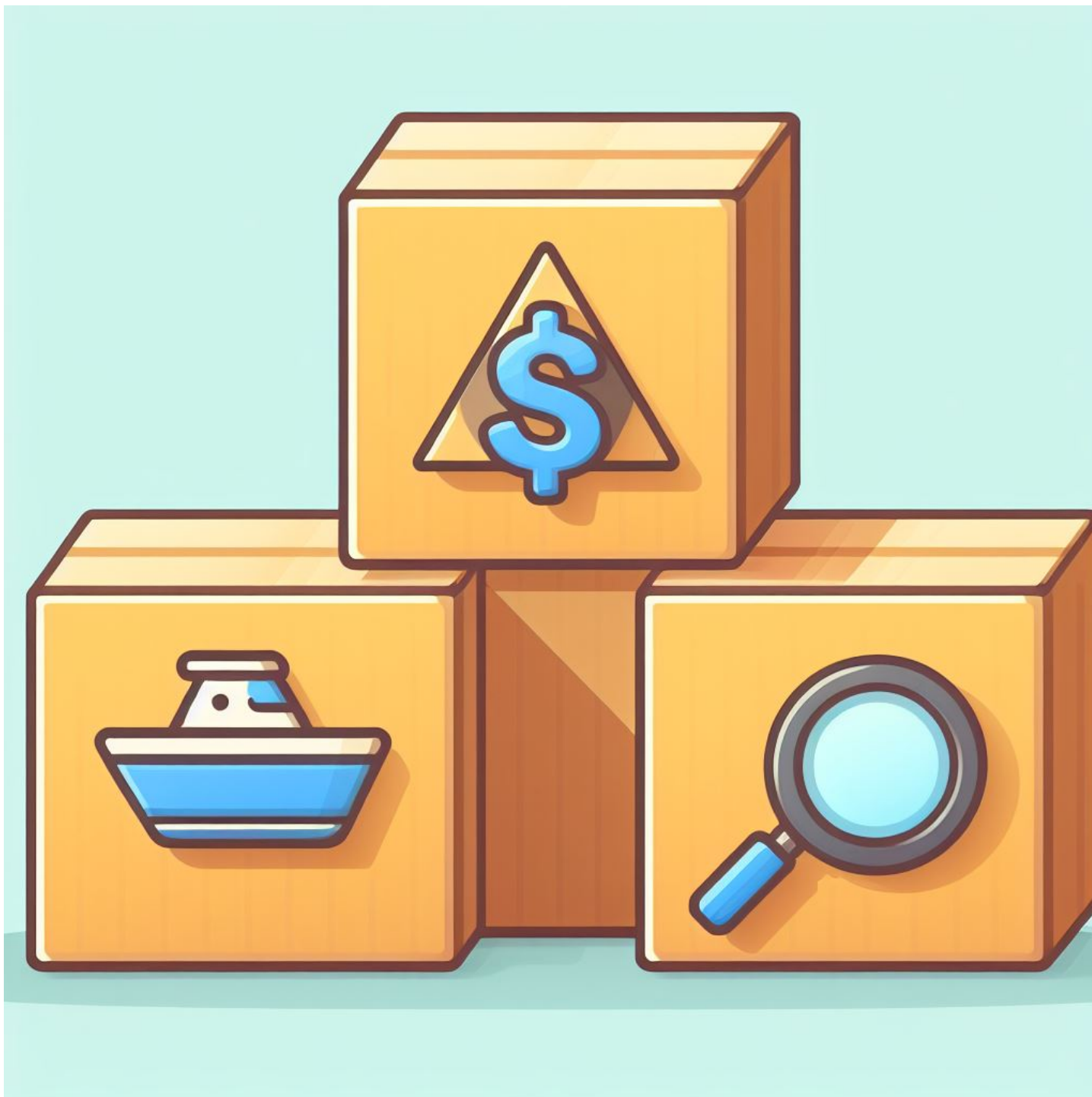
Define clear boundaries





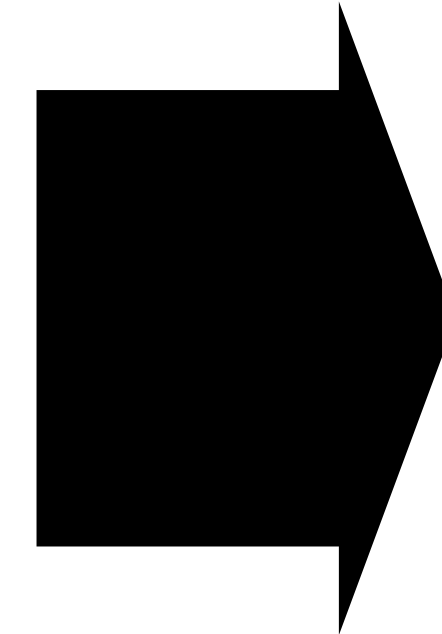
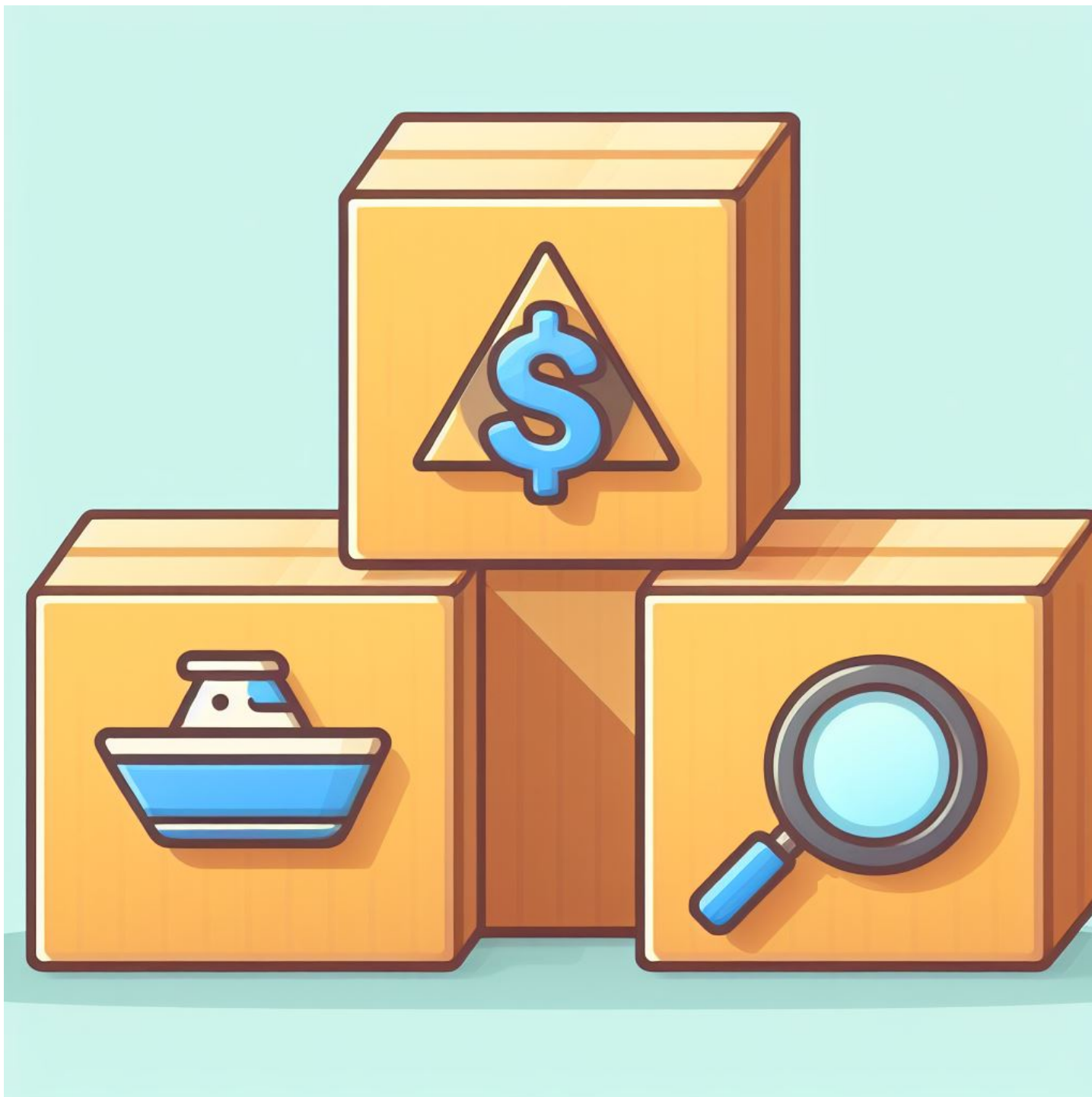
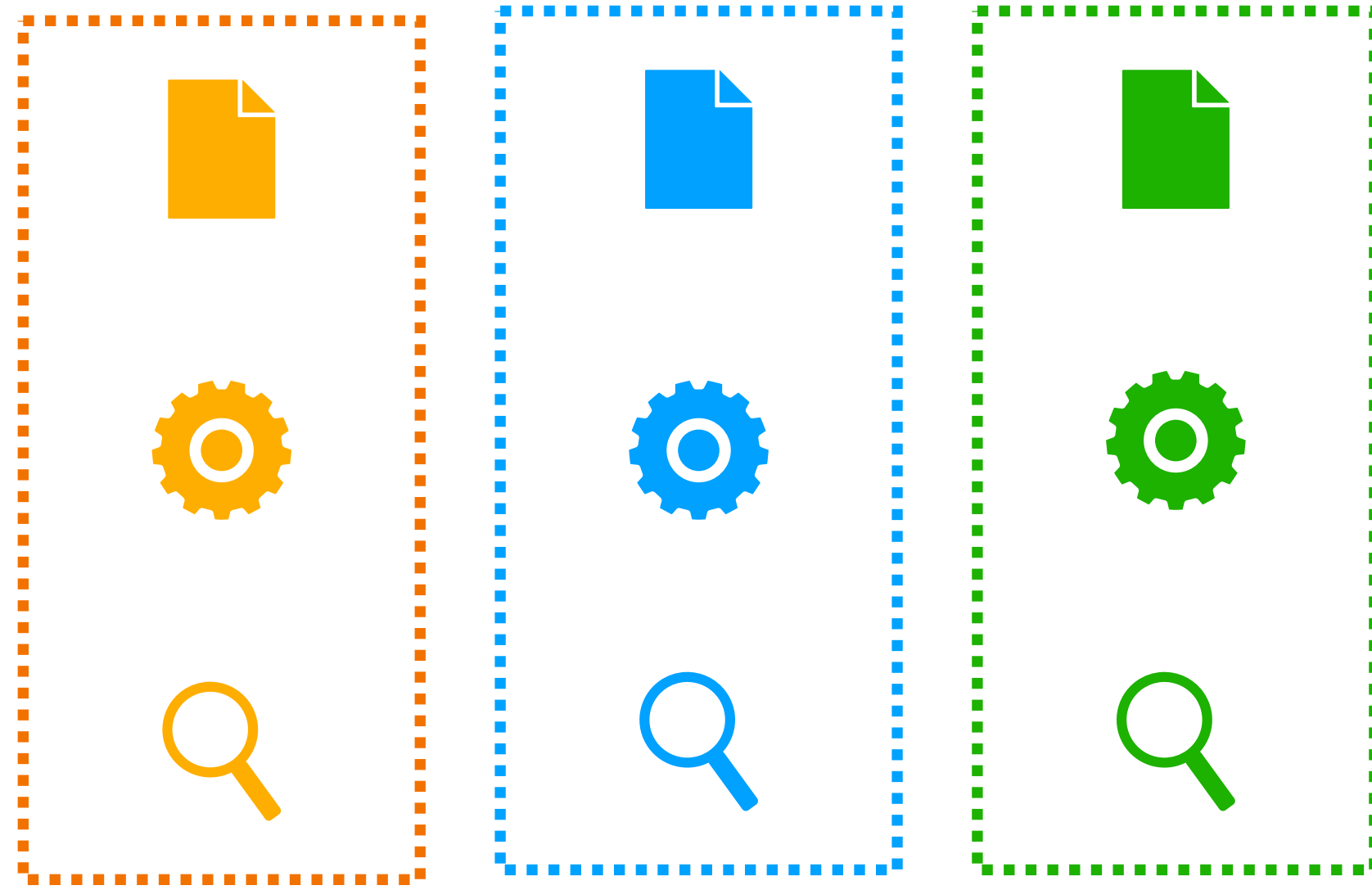
Step 3

Use the domain as the first boundary



Step 3

Use the domain as the first boundary



promotes autonomy

favours migration to MSA

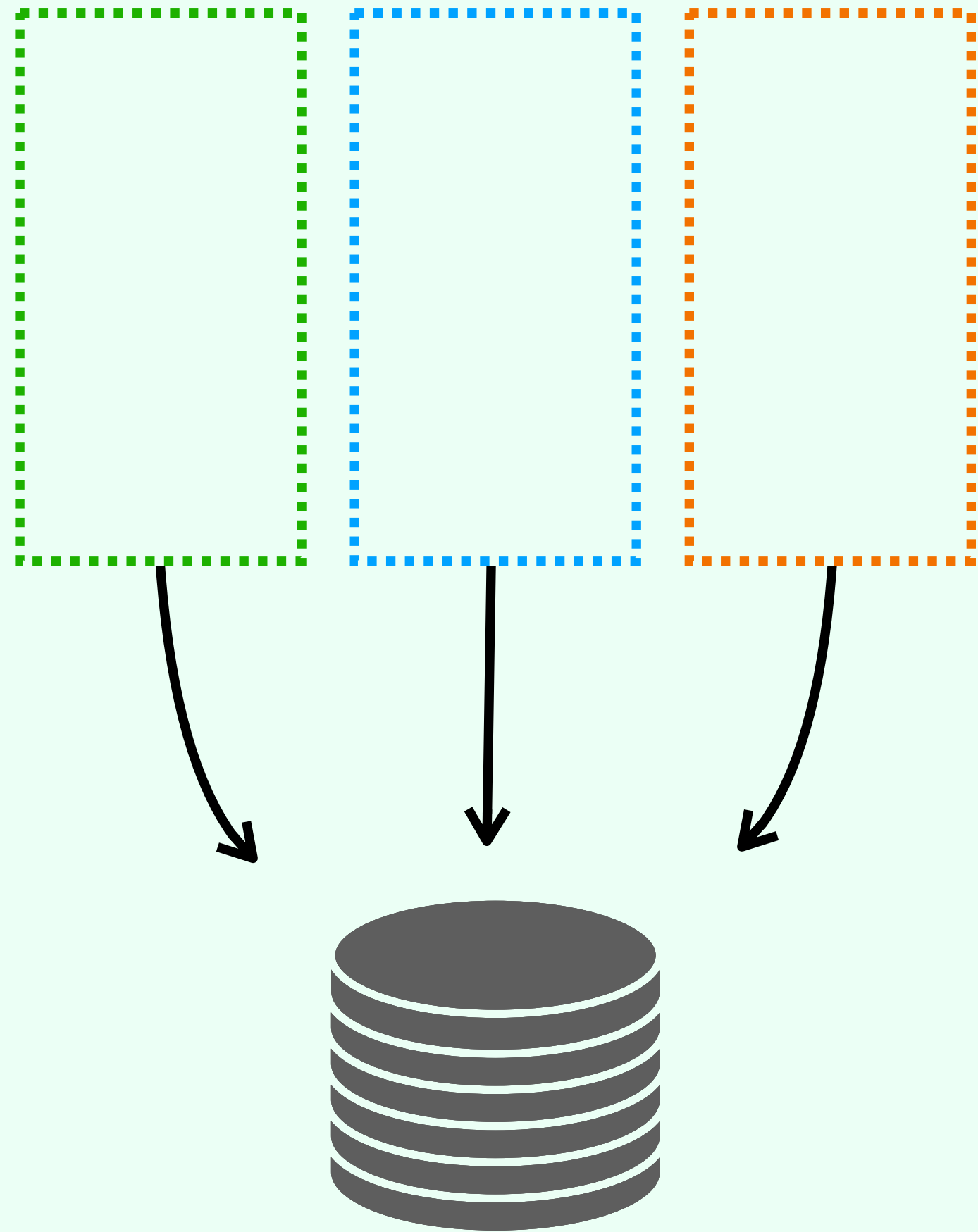
improves adherence to business

Step 3

Use the domain as the first boundary

Step 4
Separate
data by
context

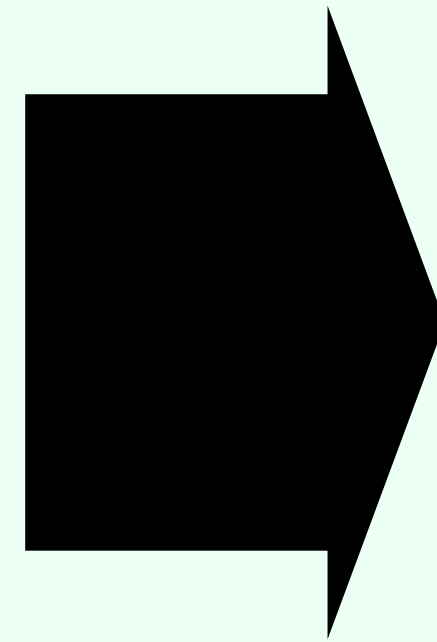




Step 4

Separate data by context

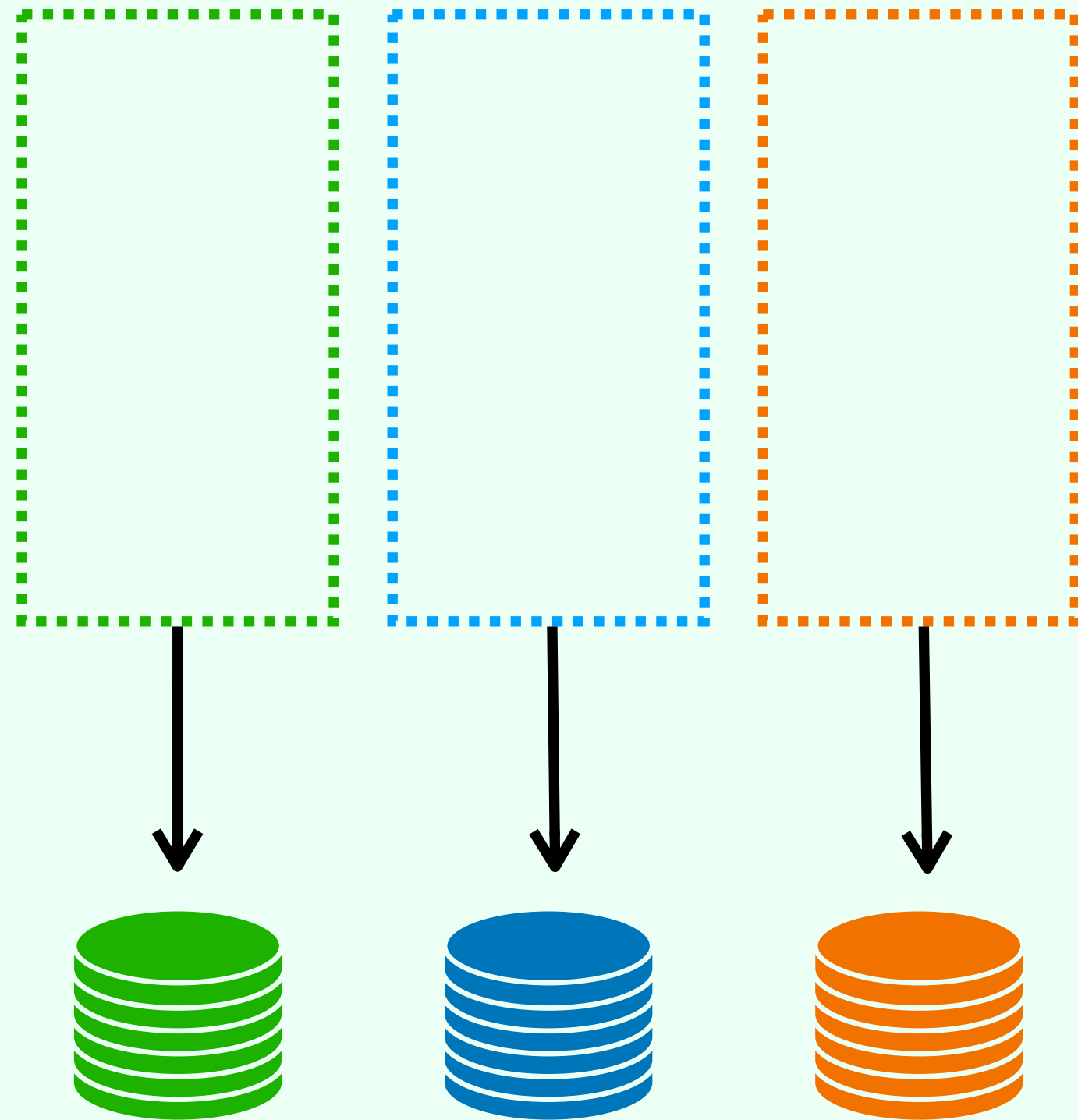




avoids race condition

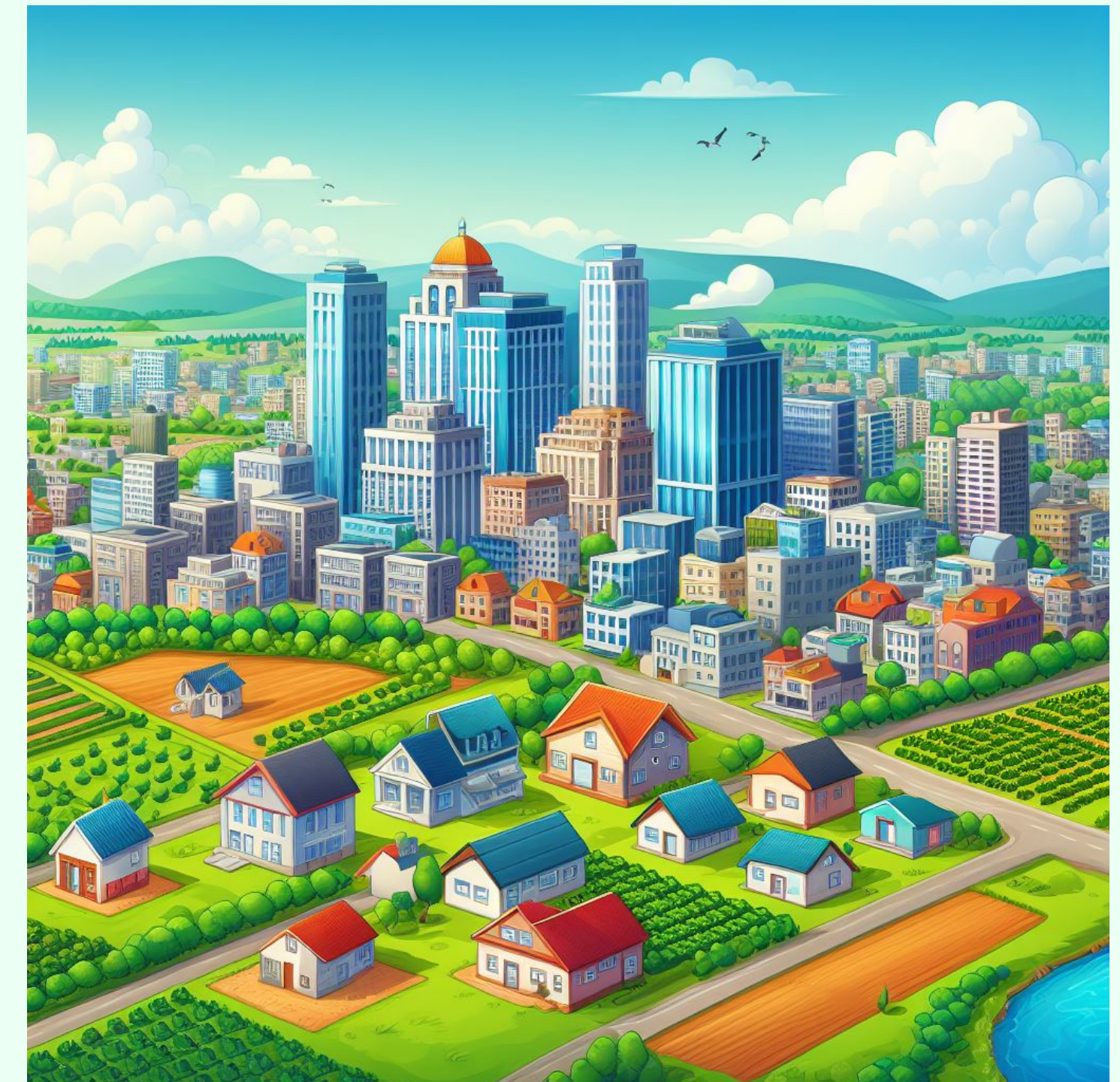
respect data ownership

enables polyglot persistence



Step 4

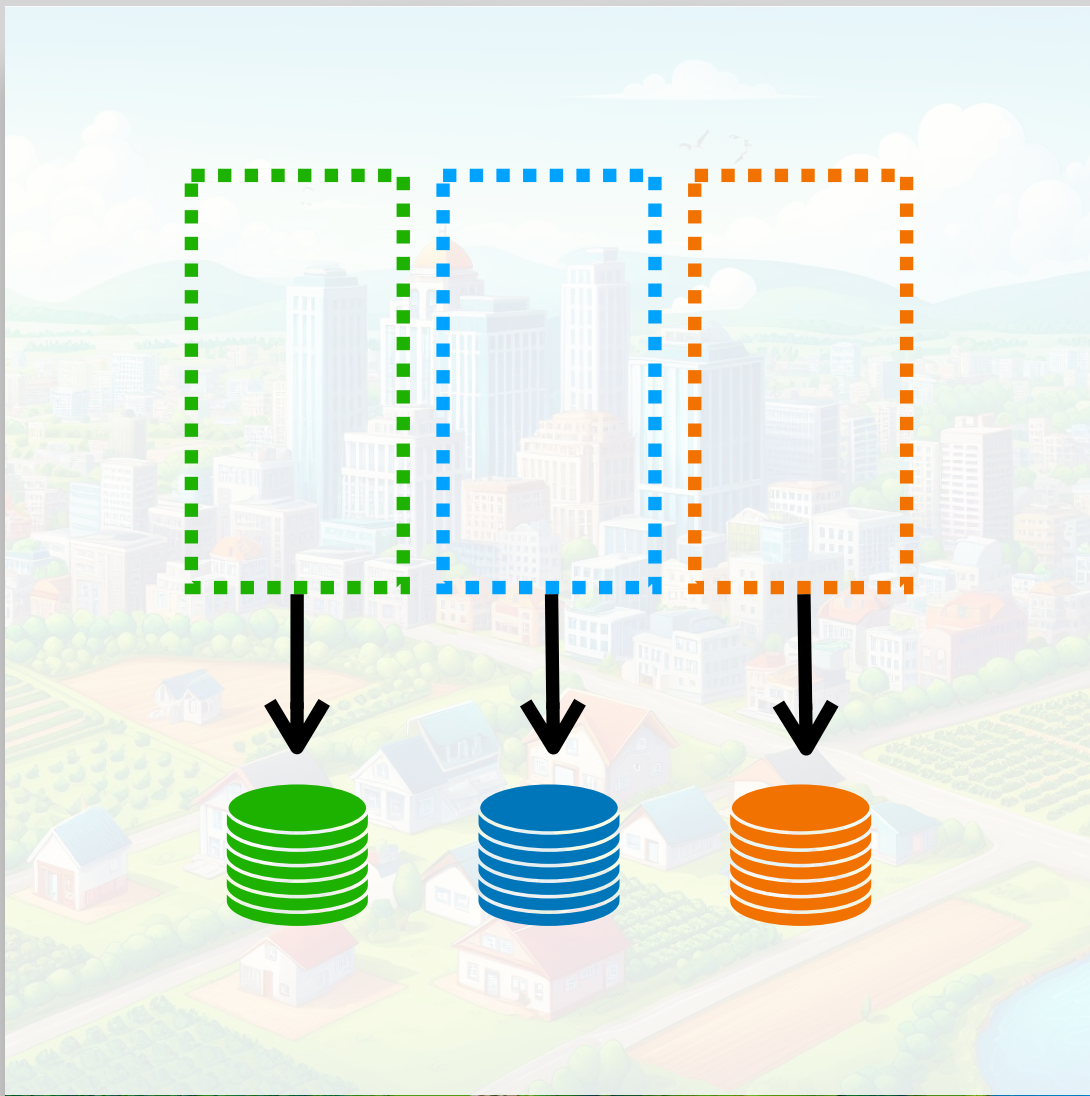
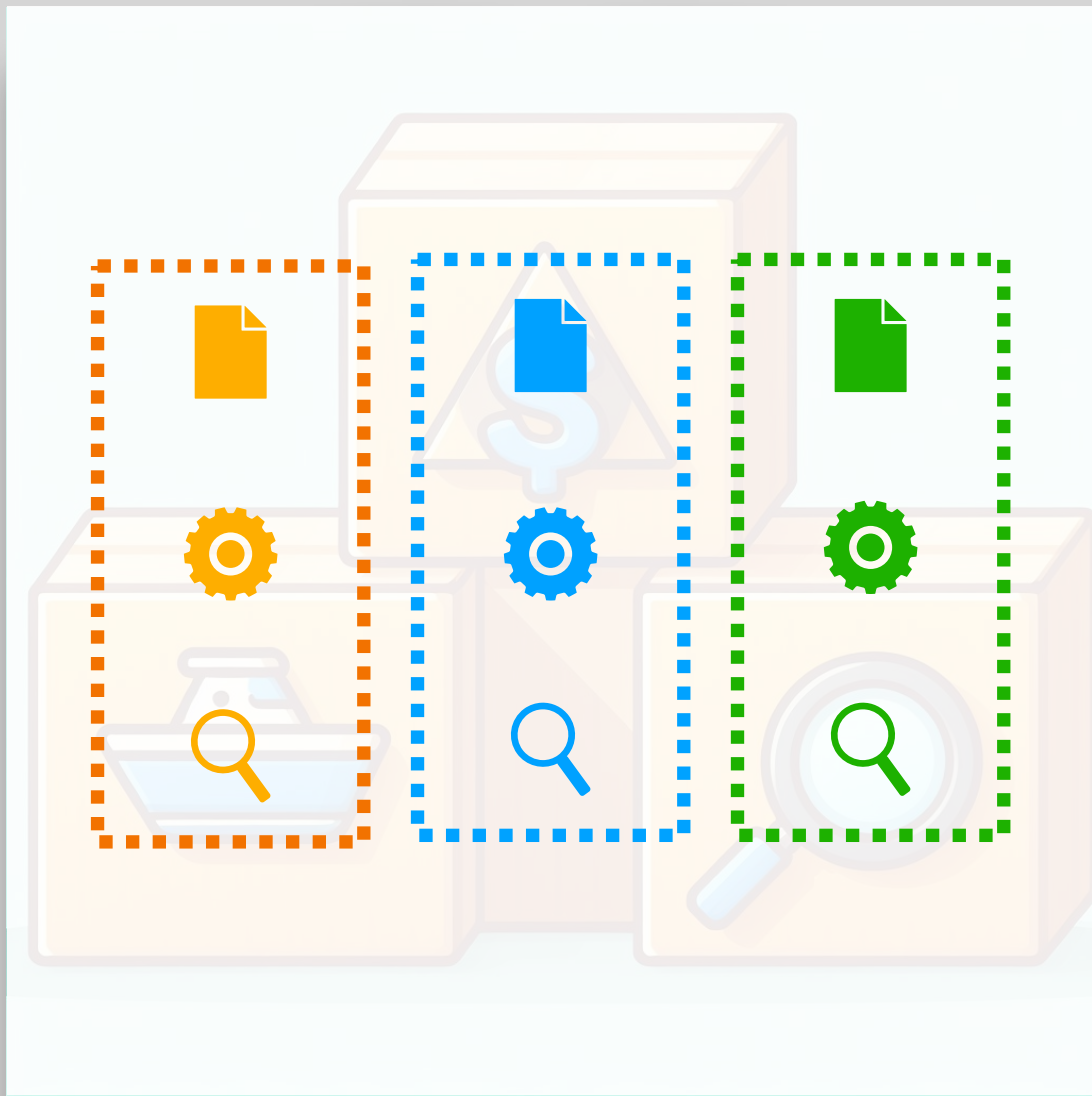
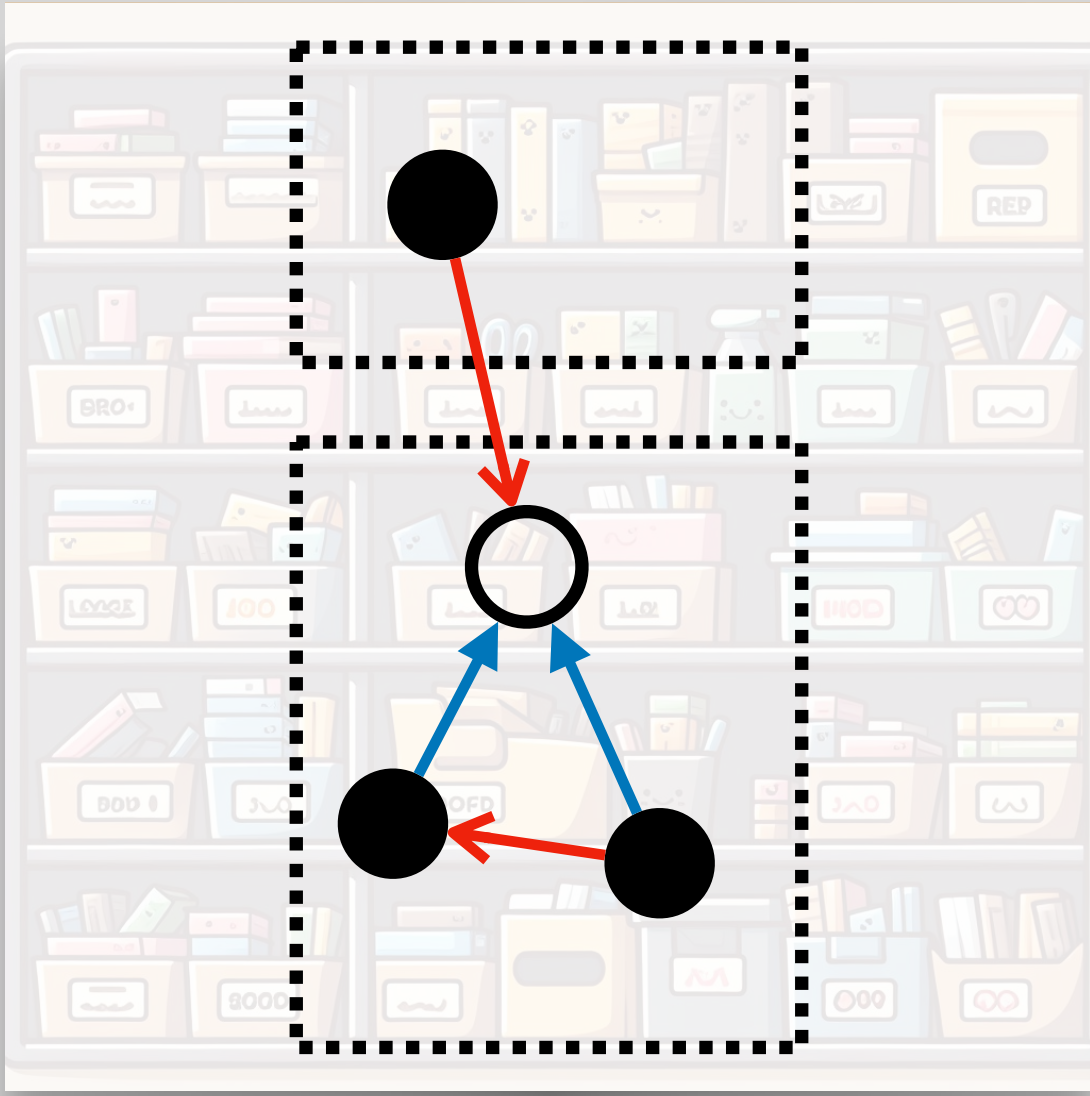
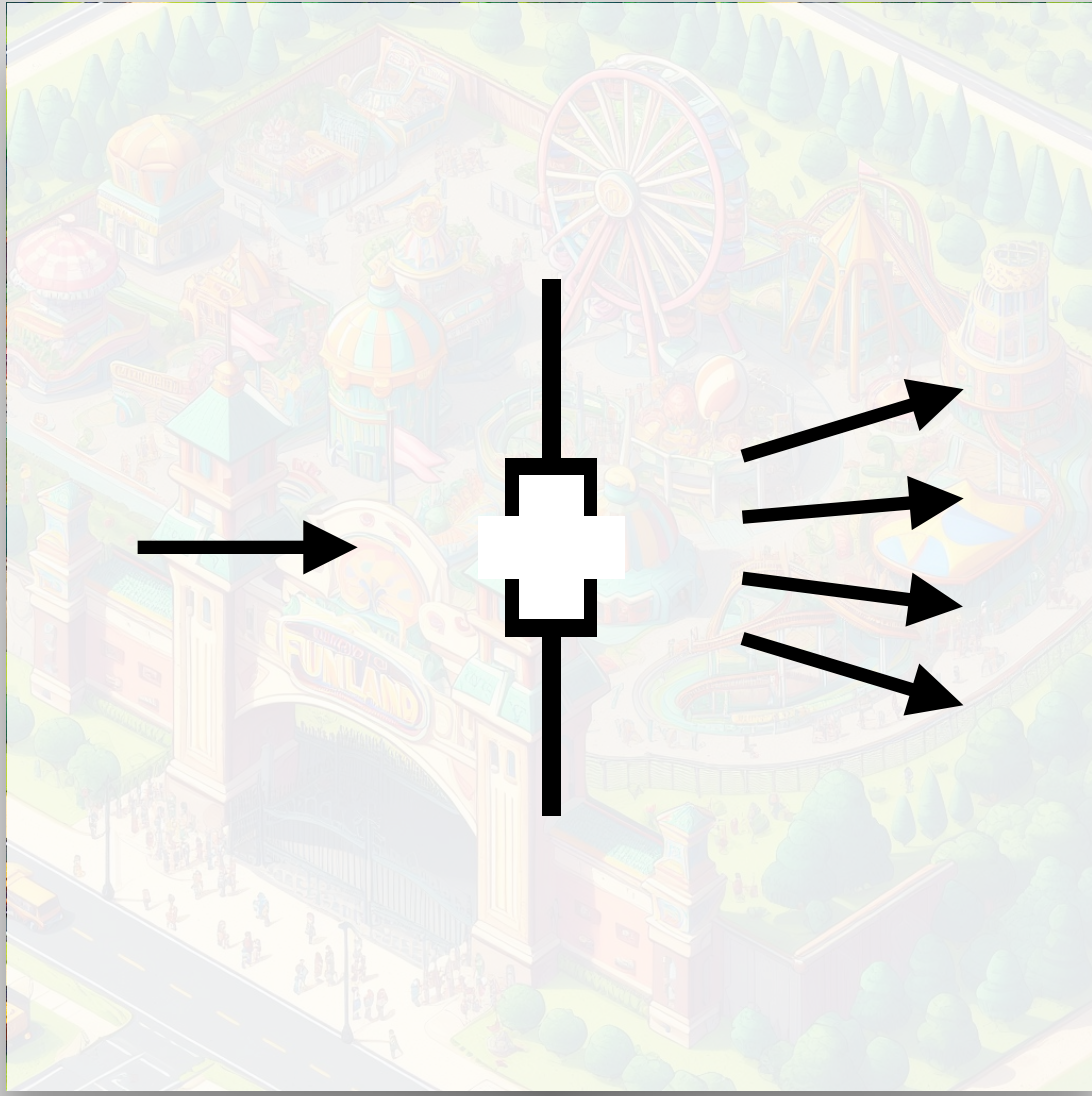
Separate data by context



Takeaways



Takeaways



Thank you



Let's keep in touch

joao.daniel@student.unibz.it

